



# Electricity Pricing Policy

---

1 April 2023 - 31 March 2024

**FY24**

**POWERCO**



# **Powerco Limited – Electricity Pricing Policy**

As referenced by Powerco Network Agreements

Electricity Pricing Schedule

Loss Factors

Billing and Settlement Process

---

**Effective: 1 April 2023**

**Version: 1.0**

# Table of Contents

**Introduction..... 5**

**Section One: Electricity Pricing Schedule ..... 5**

**Part A: General Terms and Conditions ..... 5**

1.0 Introduction..... 5

2.0 Interpretation ..... 5

3.0 Definitions..... 5

4.0 ICP Status ..... 11

5.0 Selection of Price Category..... 12

6.0 Transmission Rental Rebates (aka Loss and Constraint Excess)..... 13

7.0 New Subdivision Charges ..... 13

8.0 Miscellaneous Matters..... 13

9.0 Distributed/Embedded Generation..... 14

10.0 Embedded Networks ..... 15

11.0 Asset-Based Pricing Methodology ..... 15

12.0 Building Block Methodology (“BBM”) Asset-Based Pricing..... 17

13.0 Data File Requirements..... 18

14.0 Reactive Power Charges (formerly ‘Power Factor Charges’) ..... 18

**Part B: Western Region ..... 19**

15.0 Application ..... 19

16.0 Price Categories: E1CA, E1CB, E1UCA and E1UCB..... 19

17.0 Price Category: E100 ..... 19

18.0 Price Categories: W50 and SPECIAL (Asset-Based Pricing) ..... 20

19.0 Western Region Price Categories and Prices..... 21

20.0 Data File Requirements..... 23

**Part C: Eastern Region ..... 25**

21.0 Application..... 25

22.0 Price Categories: Tauranga Distribution Network ..... 25

23.0 Tauranga Price Categories and Prices ..... 26

24.0 Price Categories: Valley Distribution Network..... 28

25.0 Valley Price Categories and Prices ..... 29

26.0 Data File Requirements..... 31

27.0 Conditions: Builder’s Temporary Supply ..... 32

28.0 Conditions: Low Fixed Charge Price Categories and Tariff Options ..... 32

29.0 Conditions: Temporary Accommodation ..... 33

30.0 Conditions: Asset-Specific Delivery Charges..... 33

**Part D: Meter Configuration ..... 35**

31.0 Controlled Price Category and Price Components ..... 35

32.0 All Inclusive (AICO) ..... 36

33.0 Night (NITE) Only Supply ..... 36

34.0 Existing Load Control Signals by Region ..... 37

35.0 Tariff Option Descriptions & Conditions ..... 38

36.0 Metering Requirements ..... 38

37.0 Meter Register Code Reporting ..... 39

**Part E: Streetlights / Unmetered Supply..... 41**

38.0 Introduction..... 41

39.0 Western Region..... 41

40.0 Eastern Region - Conditions ..... 41

41.0 Eastern Region - Process ..... 42

42.0 Eastern Region - Calculation..... 43

**Section Two: Loss Factors..... 45**

1.0 General..... 45

2.0 Loss Factors as of 1 April 2023..... 45

3.0 Site-Specific Losses ..... 46

**Section Three: Billing and Settlement Process ..... 48**

1.0 General..... 48

2.0 Submissions – Consumption Data ..... 48

3.0 Process by Billing Methodology ..... 49

4.0 Payment ..... 51

5.0 Revision Cycles and Reconciliation ..... 51

**PAGE INTENTIONALLY LEFT BLANK**

# General terms and conditions







## Introduction

This Pricing Policy applies to the Distributor's Network effective from 1 April 2023.

The Pricing Schedule (Section One of this Pricing Policy) is referenced by Schedule 7 of all Network Agreements.

The Billing and Settlement Process (Section Three of this Pricing Policy) is referenced by Schedule 2 of all Network Agreements.

Where any provision of this Pricing Policy conflicts with the provisions of any Network Agreement, the Network Agreement will prevail.

Unless the context otherwise requires, terms used in this Pricing Policy have the meanings defined in the Network Agreement. Some additional terms are defined in Part A of the Pricing Schedule, and they apply throughout this Pricing Policy. Other additional terms are defined where required in Parts B and C of the Pricing Schedule and apply to the relevant part only.

## Section One: Electricity Pricing Schedule

### Part A: General Terms and Conditions

#### 1.0 Introduction

- 1.1 This Pricing Schedule applies to the Distributor's Network, and sets the prices for use of the Network effective from 1 April 2023
- 1.2 This Pricing Schedule is made up of five parts:
  - Part A – Price Category information applying to all Regions;
  - Part B – Price Categories for the Western Region only;
  - Part C – Price Categories for the Eastern Region only;
  - Part D – Meter Configuration;
  - Part E – Streetlights / Unmetered Supply

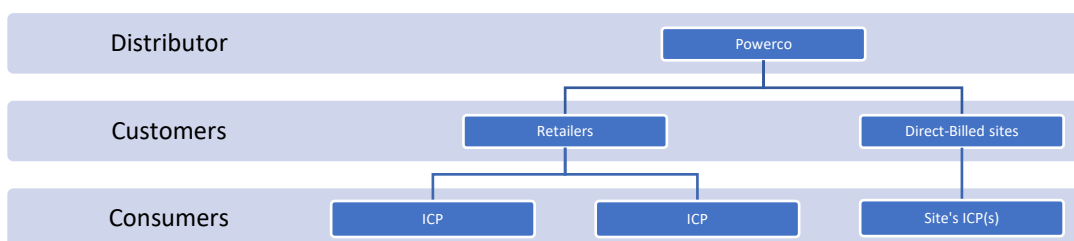
#### 2.0 Interpretation

- 2.1 All charges are exclusive of GST
- 2.2 All times stated in this Pricing Schedule are in New Zealand Daylight Saving Time

#### 3.0 Definitions

- 3.1 **“Anytime Maximum Demand” (AMD)** means the Consumer's single highest kW peak occurring any time in the 12-month period from 1 September 2021 to 31 August 2022, the result of which is applied in the subsequent Price Year commencing 1 April 2023
- 3.2 **“Average Demand Level” (ADL)** means the Consumer's average level of kW demand across the 12-month period from 1 September 2021 to 31 August 2022, the result of which is applied in the subsequent Price Year commencing 1 April 2023

- 3.3 **“Avoided Cost of Transmission” (ACOT)** is the amount equal to the theoretical reduction in Transpower’s annual charges payable by Powerco, arising as a direct result of the Generator being connected to Powerco’s Network
- 3.4 **“Calendar Year”** is a one-year period that begins on 1 January and ends 31 December
- 3.5 **“Code”** see “Electricity Industry Participation Code”
- 3.6 **“Connection”** or **“Point of Connection”** means each point of connection at which a supply of electricity may flow between the Distribution Network and the Consumer’s Installation, as defined by the Distributor
- 3.7 **“Consumer”** means the end user of electricity, where the electricity is delivered via the Distribution Network, and is generally at the ICP-level
- 3.8 **“Consumption Data”** means data, provided by the Retailer to the Distributor in the EIEP format as required under the Network Agreement, showing details of the measured electricity consumption on the Distribution Network(s) to which the Network Agreement applies
- 3.9 **“Consumption Data Due Date”** means the date the Retailer must provide Consumption Data
- 3.10 **“Consumption Month”** means the month to which Consumption Data relates
- 3.11 **“Controlled Price Category”** or **“Controlled Tariff Option”** means a Price Category or Tariff Option allocated to an ICP where the ICP meets the criteria set out in paragraph 31.0 of this Pricing Policy
- 3.12 **“Current Month”** means the month in which the charges to the Retailer are being invoiced
- 3.13 **“Customer”** means a Retailer or direct-billed Consumer, as illustrated in the hierarchy below:



- 3.14 **“Customised Price Path (CPP)”** means Powerco’s compliance with clause 8 of the Powerco Limited Electricity Distribution Customised Price-Quality Path Determination 2018, issued pursuant to Part 4 of the Commerce Act 1986
- 3.15 **“Default Interest”** means interest on the amount payable, at the Default Interest Rate, from the due date for payment until the date of payment of that amount to the relevant party accruing on a daily basis and compounded monthly

- 3.16 “**Default Interest Rate**” means the Interest Rate plus 5% per annum, provided that the Default Interest Rate must not be less than 5% per annum
- 3.17 “**Delivery Charges**” means the fixed and variable charges levied by the Distributor on Customers for the use of the Distribution Network, as described in this Pricing Policy
- 3.18 “**Demand**” means the rate of expending electrical energy expressed in kilowatts (kW) or kilovolt amperes (kVA)
- 3.19 “**Distributed Generation**” or “**Embedded Generation**” means electricity generation that is connected and distributed within the Network
- 3.20 “**Distributed Generator**” or “**Embedded Generator**” means an electricity generation plant producing Embedded Generation
- 3.21 “**Distribution Network**” or “**Network**” means:

The Distribution Network is connected to the Transpower transmission grid at the following GXPs:

<b>EASTERN REGION: VALLEY</b>	Arapuni (ARI1101) Hinuera (HIN0331) Kinleith (KIN0331 and KIN0112) Kopu (KPU0661) Piako (PAO1101) Waihou (WHU0331) Waikino (WKO0331)
<b>EASTERN REGION: TAURANGA</b>	Tauranga (TGA0111 and TGA0331) Mt Maunganui (MTM0331) Te Matai (TMI0331) Kaitemako (KMO0331)
<b>WESTERN REGION: WAIRARAPA</b>	Greytown (GYT0331) Masterton (MST0331)
<b>WESTERN REGION: MANAWATU</b>	Bunnythorpe (BPE0331) Linton (LTN0331) Mangamaire (MGM0331)
<b>WESTERN REGION: TARANAKI</b>	Carrington (CST0331) Huirangi (HUI0331) Hawera (HWA0331) Opunake (OPK0331) Stratford (SFD0331)
<b>WESTERN REGION: WANGANUI</b>	Brunswick (BRK0331) Marton (MTN0331) Mataroa (MTR0331) Ohakune (OKN0111) Wanganui (WGN0331) Waverley (WVY0111)

- 3.22 “**Distributor**” means Powerco Limited, as the operator and owner of the Distribution Networks, and includes its subsidiaries, successors, and assignees
- 3.23 “**EIEP**” means the regulated and non-regulated Electricity Information Exchange Protocols published by the Electricity Authority
- 3.24 “**Electricity Industry Participation Code**” or “**Code**” means the rules made by the Electricity Authority under Part 2 of the Electricity Industry Act 2010, as may be amended from time to time
- 3.25 “**Electrical System**” means the Distributor’s overhead and underground electricity distribution and sub-transmission power system network.
- 3.26 “**Embedded Network**” means an electricity distribution network that is owned by someone other than the Distributor, where Consumers have ICPs allocated and managed by the embedded network owner (or another Code participant appointed for the purpose), and consumers within the network have the ability to switch Retailers
- 3.27 “**Full Replacement File**” (**R**) means a Consumption Data file that is intended to fully replace a previously submitted Initial File in EIEP1
- 3.28 “**Grid Exit Point**” (**GXP**) means a point of connection between Transpower’s transmission system and the Distributor’s Network
- 3.29 “**GST**” means Goods and Services Tax, as defined in the Goods and Services Tax Act 1985
- 3.30 “**Half-Hour Metering**” (**HHR**) see “**Time-Of-Use Metering**” (**TOU**)
- 3.31 “**High-Voltage**” (**HV**) means voltage above 1,000 volts, generally 11,000 volts, for supply to Consumers
- 3.32 “**High-Voltage (HV) Metering Units**” means the collective term used to describe the Voltage and Current Transformers used primarily for transforming and isolating high voltages and currents into practical and readable quantities for use with revenue-metering equipment
- 3.33 “**Initial File**” (**I**) means the initial Consumption Data reported for an ICP, for a specific consumption period in EIEP1 or EIEP3 format
- 3.34 “**Installation Control Point**” (**ICP**) means a Point of Connection on the Distributor’s Network, which the Distributor nominates as the point at which a Retailer is deemed to supply electricity to a Consumer, and has the attributes set out in the Code
- 3.35 “**Interest Rate**” means, on any given day, the rate (expressed as a percentage per annum and rounded to the nearest fourth decimal place) displayed on Reuters’ screen page BKBM (or its successor page) at or about 10:45am on that day as the bid rate for three-month bank-accepted bills of exchange. If no such rate is displayed or that page is not available, the average (expressed as a percentage per annum and rounded up to the nearest fourth decimal place) of the bid rates for three-month bank-accepted bills of exchange quoted at or around 10.45am on that day by each of the entities listed on the Reuters’ screen page when the rate was last displayed or, as the case may be, that page was last available.

- 3.36 “**kVA**” means kilovolt-ampere
- 3.37 “**kVAh**” means kilovolt-ampere hour
- 3.38 “**kVAr**” means kilovolt-ampere reactive
- 3.39 “**kW**” means kilowatt
- 3.40 “**kWh**” means kilowatt hour
- 3.41 “**Lighting Control Equipment**” means any equipment (including meters, receivers, relays, and ripple control receivers) wherever situated within a Region, designed to receive control signals for council or NZTA street lighting, or under-verandah lights
- 3.42 “**Load Control Equipment**” means any equipment (including meters, receivers, relays, and ripple control receivers) wherever situated within a region, designed to receive Load Management Service signals. Equipment designed to receive signals to control street lighting is not considered to be Load Control Equipment and is defined as Lighting Control Equipment.
- 3.43 “**Load Management Service**” means providing a signal for the purpose of reducing or interrupting delivery of load to all or part of a Consumer’s premises within any Region
- 3.44 “**Low Fixed Charge Price Categories**” means the Price Categories that comply with the Electricity (Low Fixed Charge Tariff Option for Domestic Consumers) Regulations 2004, or as amended from time to time. Refer to the definition below for paragraph references.
- 3.45 “**Low Fixed Charge Tariff Options**” means the Tariff options for Delivery Charges described in paragraphs 23.0 and 25.0 and subject to the conditions set out in paragraph 28.0 of this Pricing Schedule
- 3.46 “**Low Voltage**” (**LV**) means voltage of value up to 1,000 volts, generally 230 or 400 volts for supply to Consumers
- 3.47 “**MVA**” means megavolt-ampere
- 3.48 “**Network Agreement**” means the Default Distributor Agreement, or any alternative agreements entered into pursuant to the Code, of which this Pricing Policy forms a part
- 3.49 “**Partial Replacement File**” (**X**) means a Consumption Data file that adds additional ICP consumption records to a previously submitted Initial File and/or replaces specific ICPs records within the EIEP1 or EIEP3 file only
- 3.50 “**Payment Month**” means the month in which the Retailer must remit money in respect to the Current Month’s charges. For electricity Retailers, the Payment Month is the same month as the Current Month.
- 3.51 “**Peak Coincident Demand**” (**PCD**) is the Consumer’s average demand during the top 100 peak periods observed on Powerco’s network. The peak periods are observed between 1 September 2021 and 31 August 2022 for the Price Year effective 1 April 2023. The PCD is used in calculating the Delivery Charges of a

- Consumer on Price Categories such as V40, T50, V60, T60 in the Eastern Region and E100, W50, and SPECIAL Price Categories in the Western Region.
- 3.52 **“Point of Connection”** means the point at which electricity may flow between the Network and the Consumer’s Installation and to which an Installation Control Point (ICP) is allocated
- 3.53 **“Powerco”** means Powerco Limited and any of its subsidiaries, successors, and assignees
- 3.54 **“Power Factor”** is the ratio of active energy, measured in kilowatts (kW), to apparent energy, measured in kilovolt amperes (kVA). Reactive power, measured in kilovolt amperes reactive (kVAr), results from a non-parity power factor and may incur charges.
- 3.55 **“Price Category”** means the relevant price category selected by the Distributor from this Pricing Schedule to define the Delivery Charges applicable to a particular ICP
- 3.56 **“Pricing Policy”** refers to this overall document, which is referenced in Schedules 2 and 7 of the Network Agreements
- 3.57 **“Pricing Schedule”** refers to Section One of this document
- 3.58 **“Price Year”** means the 12-month period between 1 April and 31 March
- 3.59 **“Processing Month”** means the month in which the Distributor processes the relevant data files
- 3.60 **“RAB”** or **“Regulatory Asset Base”** means the asset register and values that are accounted for, and reported on, in accordance with the regulatory framework set by the Commerce Commission
- 3.61 **“Reconciliation Manager” (RM)** means the person appointed from time to time as the Reconciliation Manager pursuant to the Code or such other person from time to time to whom metering data in respect of electricity is to be sent pursuant to the Code
- 3.62 **“Recoverable Costs”** has the meaning defined in the Electricity Distribution Services Input Methodologies Determination 2012, issued pursuant to Part 4 of the Commerce Act 1986
- 3.63 **“Region”** means the Eastern Region or the Western Region as the case may be
- 3.64 **“Registry”** means the Electricity Authority central Registry
- 3.65 **“Replacement Data”** means Full Replacement Files or Partial Replacement Files
- 3.66 **“Residential Connection”** means a premise that:
- (a) Is used or intended for occupation mainly as a place of residence (for example, not mainly as a business premises);
  - (b) Is the principal place of residence of the Consumer who contracts with the Retailer to purchase electricity for their use (this excludes holiday homes and other non-permanent places of residence);

- (c) Is a domestic premises as defined by Section 5 of the Electricity Industry Act 2010;
  - (d) Is not a building ancillary to a person’s principal place of residence (for example, a shed or garage) that is separately metered; and,
  - (e) Is not exempted from Low-Usage Tariff Option coverage under an exemption granted under the Electricity (Low-Fixed Charge Tariff Option for Domestic Consumers) Regulations 2004
- 3.67 “**Retailer**” means the supplier of electricity to Consumers with installations connected to the Distribution Network
- 3.68 “**Tariff Option**” means the price option within a Price Category where such a Price Category provides for Retailer choice amongst two or more options, subject to a particular configuration of metering and Load Control Equipment
- 3.69 “**Temporary Accommodation**” means a non-primary place of residence in the context of the Electricity (Low-Fixed Charge Tariff Option for Domestic Consumers) Regulations 2004, such as holiday homes and other non-permanent places of residence that are predominantly not business premises. This definition, along with any relevant conditions noted in this document, applies to the following Price Categories: V08.
- 3.70 “**Time-Of-Use Metering**” (**TOU**) (also referred to as HHR metering) means metering that measures the electricity consumed for a particular period (usually half-hourly) and complies with Part 10 of the Code. For the purposes of this document *TOU Metering* means a metering installation category of 2 or greater, as per the categories defined in the Code, that is capable of recording kVA<sub>r</sub> and/or kVA<sub>h</sub>.
- 3.71 “**Trader**” see Retailer
- 3.72 “**Transmission Rental Rebates**” means the economic value adjustment and the loss and constraint excesses rebated to the Distributor, in respect of a Distribution Network, by Transpower
- 3.73 “**Uncontrolled Price Category**” or “**Uncontrolled Tariff Option**” means a Price Category or Tariff Option allocated to an ICP where the ICP does not meet the criteria set out in paragraph 31.0

## 4.0 ICP Status

- 4.1 The status of an ICP, as recorded on the Registry, is managed by Distributors and Retailers. The ICP lifecycle, billing status and when charges are applicable for each status is detailed below:
- (a) New (999) – Newly created ICP, Delivery Charges do not apply.
  - (b) Ready (000) – Network is electrically connected, Delivery Charges do not apply
  - (c) Active (002) – Energised. Electricity is flowing, Delivery Charges applicable
  - (d) Inactive (001)
    - I. 05 – Reconciled elsewhere. Delivery Charges do not apply.

- II. 06 – Electrically disconnected ready for decommissioning. Delivery Charges do not apply.
- III. 07 – Electrically disconnected remotely by AMI meter. Delivery charges do not apply.
- IV. 08 – Electrically disconnected at pole fuse. Delivery charges do not apply.
- V. 09 - Electrically disconnected due to meter disconnected. Delivery charges do not apply.
- VI. 10 - Electrically disconnected at meter box fuse. Delivery charges do not apply.
- VII. 11 - Electrically disconnected at meter box switch. Delivery charges do not apply.
- VIII. 12 – New connection in Progress. Transitory connection state, fuse pending installation. Delivery Charges do not apply.
- (e) Decommissioned (003)
  - I. 01 – Set up in error. Delivery Charges no longer apply.
  - II. 02 – Installation dismantled – supply physically dismantled, meets requirements of Powerco permanent disconnection standard. Delivery Charges do not apply.
  - III. 03 – ICP amalgamation. Delivery Charges no longer apply.

## 5.0 Selection of Price Category

- 5.1 The Distributor will be entitled to determine which Price Category will apply to an ICP. In determining which Price Category should apply to an ICP, the Distributor will consider the Consumer's Connection, the information provided by the Consumer or their representative before application as to the expected load, the Consumer's demand profile and capacity requirements, and any other relevant factors.
- 5.2 If an ICP becomes eligible for a different Price Category, but:
  - (a) not ineligible for its current Price Category, or
  - (b) the Distributor is not made reasonably aware of this change in eligibility,then a review or re-allocation should not be expected to occur
- 5.3 If the Retailer reasonably considers that a Price Category has been inappropriately allocated to an ICP, the Retailer will notify the Distributor and the Distributor will advise the Retailer, within 10 working days, whether or not it agrees to allocate a different Price Category to that ICP. The Retailer will provide the Distributor with the reasons why it considers the Price Category has been inappropriately allocated to the ICP, and the Distributor will provide to the Retailer information relevant to its decision.
- 5.4 Where the Distributor reasonably considers that a different Price Category should be allocated to a particular ICP:
  - (a) The Distributor will notify the Retailer, including the reasons why it considers the Price Category allocated to the ICP should be changed; and



- (b) Unless the Retailer is able to provide evidence to the Distributor’s reasonable satisfaction within 10 working days of the Distributor’s notice that the current Price Category is appropriate, the Distributor will be entitled to allocate the Price Category that it considers appropriate to that ICP and to commence charging the Retailer for Distribution Services in accordance with that Price Category after a further 40 working days; and
- (c) The Distributor will provide to the Retailer information relevant to its decision.

**6.0 Transmission Rental Rebates (aka Loss and Constraint Excess)**

- 6.1 Powerco receives Loss and Constraint Excess payments from Transpower each month. These are distributed as follows:
  - (a) Allocated to Customers in proportion to their respective kWh volumes, by Region, using the initial billing volumes that correspond with the TPNZ credit note month
  - (b) These payments will not be subject to revisions if the underlying Retailer’s initial billing volumes change

**7.0 New Subdivision Charges**

- 7.1 Subject to the Electricity (Low Fixed Charge Tariff Option for Domestic Consumers) Regulations 2004, where the Distributor extends the Distribution Network to establish new Connections in a subdivision development, the Distributor may notify charges that will apply specifically to those new Connections and the dates from which such charges are to be effective

**8.0 Miscellaneous Matters**

- 8.1 The following charges are payable by the Retailer or Customer, although may be waived at the Distributor’s discretion:

MISCELLANEOUS FEES	CHARGE
<b>A Price Category or Tariff Option Change Fee:</b> Payable by the requesting Retailer when a current Consumer’s Price Category or Tariff Option is changed more than once in any Calendar Year	\$30 per Point of Connection (payable for the second and each subsequent change)
<b>B Incorrect or Incomplete Consumption Data Fee:</b> Payable where Consumption Data, to be provided by the Retailer to the Distributor, does not comply with the requirements of the Network Agreement. It will be charged on the basis of the actual time spent by a billing analyst or the cost of engaging external consultants/experts to review, correct, validate and reconcile the information.	\$100 per hour
<b>C Late Consumption Data Fee:</b>	

MISCELLANEOUS FEES	CHARGE
Payable where the Consumption Data required to be provided by the Retailer to the Distributor is received by the Distributor after the due date for the receipt of that Consumption Data. The charge is based on the Distributor's cost of funds and the cost of using billing analysts to address the delay.	The reasonable costs incurred by the Distributor (including costs associated with late receipt of payment due to late invoicing) as a result of the late data supply. \$100 per hour for each billing analyst's hour required to address the late supply of data.
<b>D Ad hoc Report Fee:</b> Payable where a Retailer requests an ad hoc report that is not generally supplied by the Distributor	\$100 per hour or such other fee as may be agreed
<b>E Non-Network Fault Fee:</b> All non-Electrical Systems fault work, or Retailer or Customer services not listed above	Charged to the Customer on a time and materials basis, at market rates, subject to a minimum of \$150
<b>F Seasonal and Temporary Disconnection Fee:</b> Charges to consumers are allocated on the basis of a full Price Year, and therefore intended to apply for a period of 12 months. Where an installation is disconnected and subsequently reconnected within a 12-month period, the Distributor may apply a connection fee equivalent to the fixed charges applicable during the period of disconnection.	A fee equivalent to the fixed charges applicable during the period of disconnection
<b>G Temporary Safety Disconnections:</b> No fee is applicable for a temporary safety disconnection conducted by the Distributor in accordance with the conditions set out in Powerco standards 170S008	Free

## 9.0 Distributed/Embedded Generation

- 9.1 Any person wanting to connect a Distributed/Embedded Generator to the Network must apply to the Distributor for consent to such connection. All applications for the connection of Distributed/Embedded Generators to the Network will be assessed by the Distributor on a case-by-case basis, having regard to Part 6 of the Electricity Industry Participation Code 2010, Powerco's Distributed Generation Policy and the circumstances that apply in each case.
- 9.2 Powerco's Distributed Generation Policy is published on Powerco's website at: <https://www.powerco.co.nz/get-connected/distributed-generation/>
- 9.3 Any Distributed/Embedded Generator connected to the Network is subject to Part 6 of the Electricity Industry Participation Code 2010 and Powerco's Distributed Generation Policy, or a separate Distributed/Embedded Generation Network Connection Agreement between the Distributor, the party wanting to connect the Distributed/Embedded Generator and, if appropriate, the Retailer.

- 9.4 Export volumes for Distributed Generation connections must be submitted as directional volume within the EIEP1 or EIEP3 Consumption files (no “netting off” should apply to the load or generation volumes in these files)
- 9.5 Any Distributed Generation connection with a Power Factor of less than 0.95 lagging may attract a reactive power charge as detailed in paragraph 14.0. For full details, please refer to Powerco’s Distributed Generation Policy.

## 10.0 Embedded Networks

- 10.1 Any person wanting to connect a new Embedded Network to the Network must apply to the Distributor for consent and comply with Powerco’s Network Connection Standard and Embedded Network Standard. All applications for the connection of an Embedded Network to the Network will be assessed by the Distributor on a case-by-case basis, having regard to the circumstances that apply in each case.
- 10.2 Any new Embedded Network connected to the Network will be subject to Powerco’s Network Connection Standard, and a separate agreement between the Distributor and the party wanting to connect the Embedded Network and, if appropriate, the Retailer.
- 10.3 The Price Category for an Embedded Network will be determined on the combined installed or connected capacity, which may result in asset-based pricing being applied. The pricing may include a minimum level of chargeable demand applied to the connection, along with other terms as part of the separate agreement referred to above.

## 11.0 Asset-Based Pricing Methodology

- 11.1 This applies by default to large Powerco Consumers in the Eastern and Western Regions, and smaller Consumers that may be better suited to an asset-based price. Powerco groups its large Consumers into the following Price Categories:
- Western Region: Installed capacity 301kVA and above: W50, SPECIAL
  - Eastern Region: Installed capacity 300 kVA and above: T50, T60, V40, V60
- Other Consumers to whom asset-based pricing may apply include:
- Connections with Distributed or Embedded Generation;
  - Public Electric Vehicle Charging Stations; and
  - Bypass pricing
- 11.2 The methodology for setting Delivery Charges under asset-based pricing comprises the following components:
- Measurement of Consumer demand;
  - Asset valuation and allocation;
  - Return of and on capital;
  - Allocation of maintenance costs; and
  - Allocation of indirect costs (fixed and variable)

- 11.3 Asset-based charges to Consumers are allocated on the basis of a full Price Year and therefore apply for the full Price Year
- 11.4 Powerco bases some Consumer charges on level of demand and network usage, measured using AMD, PCD, ADL and capacity. The demands applied to new Consumers are estimated as per paragraph 11.10, and will revert to actual values for subsequent Price Years.
- 11.5 Powerco's asset-based pricing involves allocating assets to Consumers using two main categories:
- (a) On-site assets: Dedicated assets behind the Point of Connection and normally include transformers and switchgear. These assets are allocated fully to the Consumer to whom they relate.
  - (b) Upstream assets: The meshed assets of the network. These assets are usually shared between a number of Consumers and generally may be categorised as: feeder assets; substation assets; subtransmission assets; and Grid Exit Point (GXP) assets. These assets are allocated across the Consumers that they serve.
- 11.6 Powerco's charges are determined to obtain a return on the capital it has invested. In the asset allocation process, an annual rate of return is sought on the asset valuations attributed to each Consumer. The rate of return is equivalent to Powerco's prevailing Weighted Average Cost of Capital (WACC) plus allowances for additional commercial-based factors. This WACC is an estimate of Powerco's overall cost of capital, inclusive of equity and debt.
- 11.7 Maintenance costs of on-site and upstream assets are allocated according to the asset types and values to T60, V60 and SPECIAL connections. T50, V40 and W50 allocations are on the basis of the Price Category's RAB relative to the total applicable GXP's RAB. These costs are dispersed amongst the Consumers within the load group on the basis of the Consumers' AMD relative to the aggregated AMD of the load group.
- 11.8 Indirect costs are all costs of Powerco's electricity business excluding transmission, maintenance, interest, and tax. Indirect costs are allocated to the Price Category on the basis of the Category's total throughput relative to the total applicable GXP's throughput. These costs are recovered via a fixed charge to each Consumer in the load group, and an allocation to each Consumer based on their PCD.
- 11.9 Powerco's transmission allocations are based on passing through Transpower's charges, determined using the current Transmission Pricing Methodology ("TPM"), which has been approved by the Electricity Authority. The TPM is used to recover the full economic costs of Transpower's services.
- 11.10 When a Powerco Consumer enters an asset-based load group the following policies apply:
- Powerco will estimate the AMD, PCD, and ADL for the new or upgraded site. This estimate will be based on an assessment of the plant and machinery located on the site, demand from similar sites across the industry and any estimates of demand provided by the Consumer.

- The estimated demand will apply for the current Price Year (ie between the later of 1 April or the connection date for the upgraded assets and 31 March of the subsequent year).
- The estimated demand will assume full demand from the time of the installation of the asset (rather than ramping up over a period of time), unless otherwise agreed between Powerco and the Consumer, or their representative, at the time of Powerco's approval of the request for site connection or alteration.
- The estimated demand will continue to apply in the subsequent year if the upgraded site has not been connected and operational for the full duration of the applicable measurement period, unless otherwise agreed between Powerco and the Consumer or their representative, at the time of Powerco approval of the request for site connection or alteration.
- New prices will be effective from network livening (ie Active status).

11.11 The following Powerco policies apply when a site exits an asset-based load group or revision to charges is requested:

- If a Consumer intends exiting a site, and the Retailer is notified of this intention, the Retailer must notify Powerco as soon as practical so that final charges can be determined and levied in the forthcoming billing run.
- Powerco, at its discretion, may allow a Consumer to exit the load group when the site downgrades its installed capacity. Alternatively, Powerco may require the site to continue to the end of the Price Year in the current load group at the current peaks, for instance if an upgrade to the site has only recently occurred.
- Powerco may leave the Consumer in the same load group and downgrade peak estimates in instances where there is no removal of on-site assets but there will be a reduction in loading on the Network.
- Where there is a bona fide change in Consumer at a premises (ie new entity), the Retailer may apply for, and Powerco will at its discretion undertake, a review of the asset-based charges once during the Price Year to reflect the change arising from an alteration in AMD and the expected change in PCD and ADL.

## 12.0 Building Block Methodology (“BBM”) Asset-Based Pricing

12.1 This pricing methodology applies to very large (typically >4MVA) Customers in both Regions. These Customers will have a direct contractual relationship with Powerco for a defined term. BBM asset-based pricing will be available primarily to Customers where:

- A step change development and consequently investment is needed, but the increase in Customers' demand may not be as significant; or
- A new Customer connection requires significant investment

12.2 The BBM asset-based pricing comprises the following input components:

- Return on capital investment, plus accounting depreciation in period or year;
- Sub-transmission cost allocation of direct and indirect costs for sub-transmission asset utilisation in period or year;

- Operating and maintenance costs;
- Tax adjustment; and
- Pass through of Recoverable Costs such as transmission charges

### 13.0 Data File Requirements

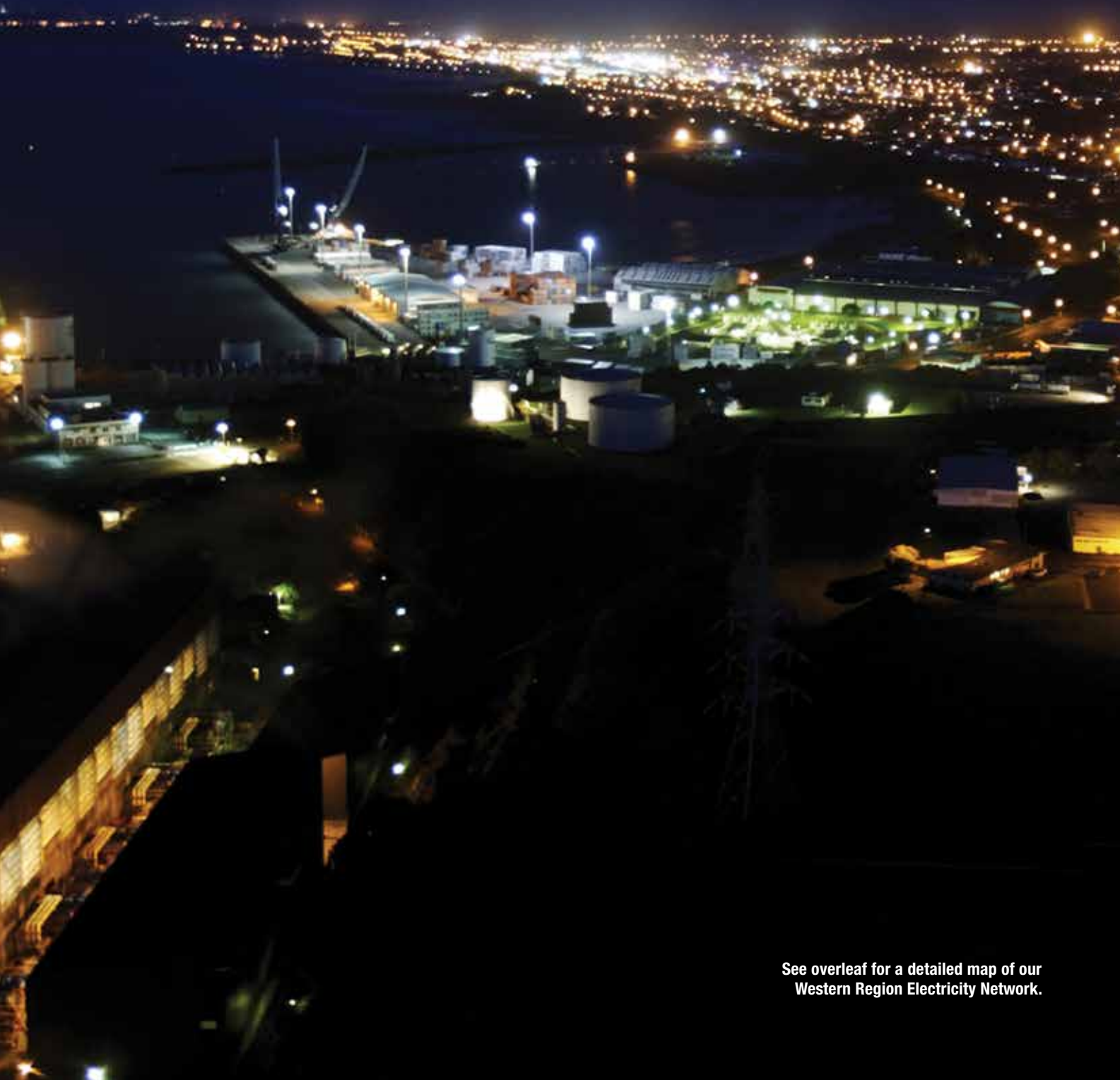
- 13.1 Powerco requires data files for non-half hourly ICPs to be provided in the latest regulated version of the EIEP1 and EIEP3 protocols for half hourly data
- 13.2 Powerco requires EIEP1 submission files from Retailers to be in the “Replacement Normalised” format, which aligns to the Reconciliation Manager process
- 13.3 From 1 April 2021, Powerco no longer allows EIEP1 submission files in the "Incremental Normalised" format. It is expected that all Retailers implement a transition plan to move away from "Incremental Normalised" to "Replacement Normalised" prior to this date.
- 13.4 Powerco uses the dash (-) as a file separator between the Price Category and the Tariff Option for non-half hourly data, as of 1 April 2020. Prior to this the tilde (~) was used as a separator.
- 13.5 In the Western Region, fixed charges and variable consumption should be provided to Powerco as outlined in paragraph 20.0. In the Eastern region, variable consumption should be provided to Powerco as outlined in paragraph 26.0.

### 14.0 Reactive Power Charges (formerly ‘Power Factor Charges’)

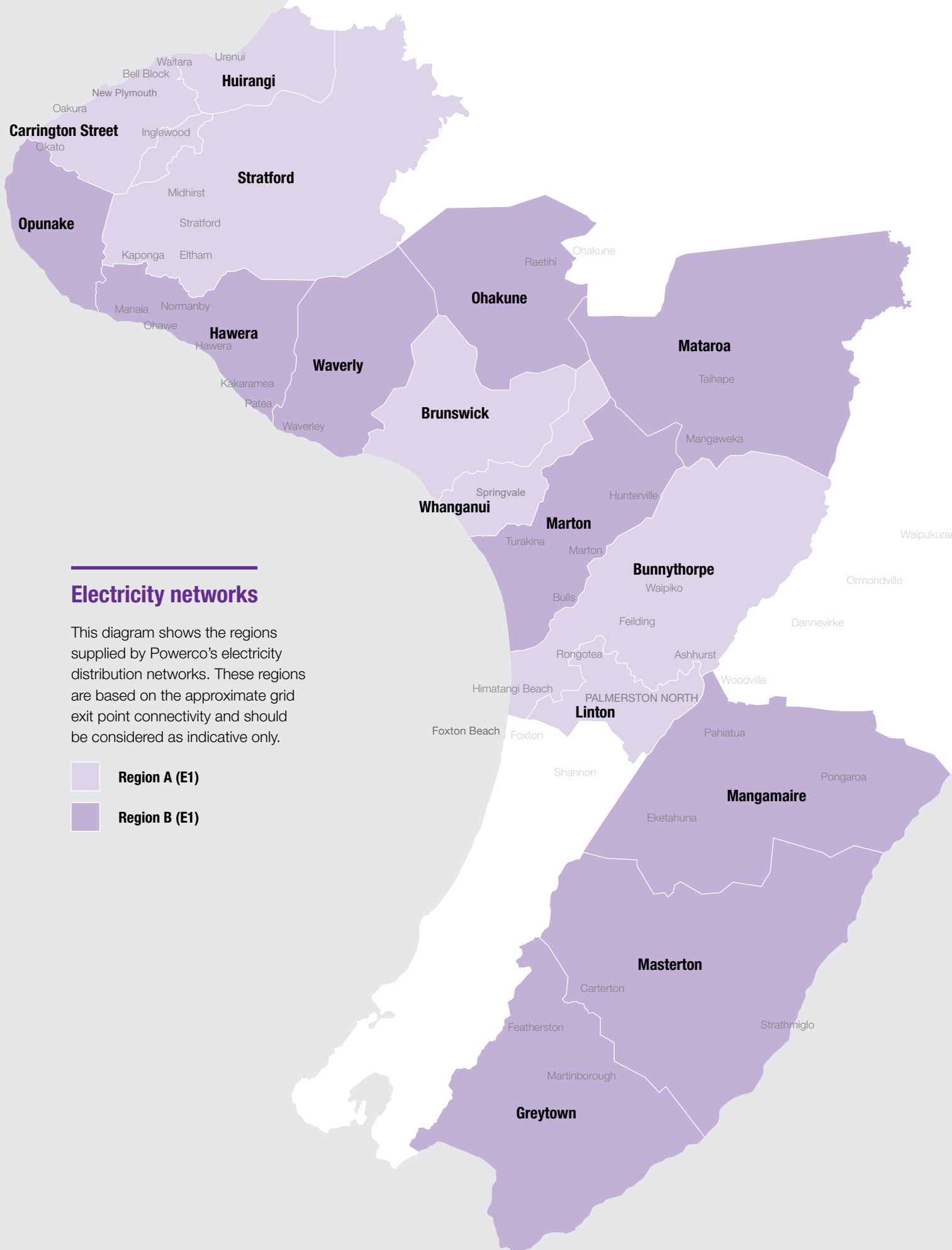
- 14.1 If a Consumer’s Power Factor at a Connection is less than 0.95 lagging, the reactive power calculation will result in a per kVAr charge, as set out in the tables in paragraphs 19.0, 23.0, and 25.0
- 14.2 The kVAr chargeable quantity represents the largest monthly difference between the kVAr amount recorded in any one half-hour period, and one third of the kW demand recorded in the same half-hour period. The charge is applicable only during weekdays, between 7 am and 8 pm (trading periods 15 to 40 inclusive).
- 14.3 The Distributor, subject to 14.4 below, will apply reactive power charges for all Consumers with TOU metering:
  - For the Western Region, this will be Price Categories E100, W50, and SPECIAL
  - For the Eastern Region, this will be Price Categories V28, V40, V60, T28, T50, and T60
- 14.4 The Distributor, at its discretion, may elect not to levy reactive power charges on a particular ICP. This will typically occur where an ICP has onsite generation which interferes with accurately measuring the network impact of reactive power.

An ICP will be exempted from reactive power charges through moving it to a Price Category ending with "N". For instance, an ICP with the Price Category V28 would be moved to Price Category "V28N", where no reactive power charges are being levied.

# Western Region



See overleaf for a detailed map of our Western Region Electricity Network.



## Electricity networks

This diagram shows the regions supplied by Powerco's electricity distribution networks. These regions are based on the approximate grid exit point connectivity and should be considered as indicative only.

- Region A (E1)**
- Region B (E1)**



## Part B: Western Region

### 15.0 Application

- 15.1 This Part applies to the Western Region Network only

### 16.0 Price Categories: E1CA, E1CB, E1UCA and E1UCB

- 16.1 E1CA, E1UCA, E1CB, and E1UCB apply to Connections on any of the Western Region Distribution Networks that are typically of a capacity of 100 kVA or less, and are collectively referred to in this Part as the “E1 Price Category”
- 16.2 Powerco may, at its discretion, place ICPs with a connection capacity of greater than 100 kVA into the E1 Price Category
- 16.3 E1CA and E1CB are only available for those Connections that meet the criteria for a Controlled Tariff Option set out in paragraph 31.0, with the extent of control being:
- (a) Under normal supply circumstances, at any time for a maximum of seven hours per day
  - (b) Under abnormal supply or operating circumstances (eg where there is a shortage or anticipated shortage of electricity), control may be for greater than seven hours per day.
- 16.4 Refer to Section Three: Billing and Settlement Process, paragraph 3.0 for details of the E1 charge calculations
- 16.5 Unmetered Streetlights  
Refer to Part E: Streetlights / Unmetered Supply of this document

### 17.0 Price Category: E100

- 17.1 E100 applies to a Connection on any of the Western Region Distribution Networks with a capacity of greater than 100 kVA and less than or equal to 300 kVA, which has been approved by the Distributor and is subject to the following conditions:
- (a) The Connection must have installed TOU metering; and,
  - (b) A minimum chargeable demand of 30 kW will apply
- 17.2 Calculation of E100 charges:
- (a) Fixed Daily Charge (FDC) – applied to each ICP
  - (b) E1DIST\* and E1TRAN\* – these charges are based on the Anytime Maximum Demand (AMD) of a given connection, with:
    - I. The chargeable AMD being 30 kW or the actual demand, whichever is the higher
    - II. New E100 Connections, where less than 12 months data is available, the chargeable AMD being estimated by the Distributor based on an assessment of the plant and machinery located on the site, demand

from similar sites across the industry and any estimates of demand provided by the Consumer

## 18.0 Price Categories: W50 and SPECIAL (Asset-Based Pricing)

- 18.1 W50 applies to a Connection on any of the Western Region Distribution Networks with a capacity of greater than 300 kVA, which has been approved by the Distributor and is subject to the following conditions:
  - (a) The capacity is calculated as the sum of all installed transformer capacities (nameplate rating), where those transformers are dedicated to the Connection
  - (b) The Connection must have TOU metering installed, and is subject to a minimum chargeable demand of 100 kW per month
- 18.2 W50 may also apply to Connections with less than 300kVA of installed capacity at the Distributor's discretion – for instance if a backup supply is required, or there is significant generation at the site
- 18.3 The Price Category of SPECIAL applies to large commercial/industrial Connections in the Western Region and the charges are determined on an individual basis
- 18.4 The SPECIAL Price Category typically applies to Connections with an installed capacity of 1,500 kVA or higher
- 18.5 The SPECIAL Price Category may also be used for sites with unique circumstances that are not appropriately catered for by other Categories (eg sites with Distributed Generation that could fluctuate between significant demand and significant export; those with dedicated Powerco assets that may generate over or under-recovery on another Price Category, or those that are at risk of by-pass)
- 18.6 Charges for Price Categories W50 and SPECIAL are typically determined as a fixed daily charge, and are usually fixed for the 12-month period starting 1 April, but are subject to periodic review based on site-specific information, including electricity demand and volume data
- 18.7 For further information on asset-based pricing, please refer to paragraph 11.0

## 19.0 Western Region Price Categories and Prices

**Price Categories: E1UCA, E1UCB, E1CA, E1CB – All Residential and General Connections (non-TOU and TOU metered) typically with installed capacity of 100 kVA or less**

Price Category Code	Zone	Description	Price Component Code	Delivery Price <sup>1</sup>	Unit of Measure	Data File Type
E1UCA	A	BRK0331, BPE0331, CST0331, HUI0331, LTN0331, SFD0331, WGN0331				
		Daily Charge	E1UCA-FDC	45.00	c/day	
		Peak Charge <sup>2</sup>	E1UCA-ERP	13.39	c/kWh	
		Day (Off-Peak) Charge <sup>3</sup>	E1UCA-ERD	6.51	c/kWh	EIEP1
		Night (Off-Peak) Charge <sup>4</sup>	E1UCA-ERN	6.51	c/kWh	
		Demand Charge <sup>5</sup>	E1UCA-ERL	0.00	\$/kW/month	
E1UCB	B	GYT0331, HWA0331, MGM0331, MTN0331, MST0331, MTR0331, OKN0111, OPK0331, WVY0111				
		Daily Charge	E1UCB-FDC	45.00	c/day	
		Peak Charge <sup>2</sup>	E1UCB-ERP	15.20	c/kWh	
		Day (Off-Peak) Charge <sup>3</sup>	E1UCB-ERD	8.87	c/kWh	EIEP1
		Night (Off-Peak) Charge <sup>4</sup>	E1UCB-ERN	8.87	c/kWh	
		Demand Charge <sup>5</sup>	E1UCB-ERL	0.00	\$/kW/month	
E1CA	A	BRK0331, BPE0331, CST0331, HUI0331, LTN0331, SFD0331, WGN0331				
		Daily Charge	E1CA-FDC	30.00	c/day	
		Peak Charge <sup>2</sup>	E1CA-ERP	13.39	c/kWh	
		Day (Off-Peak) Charge <sup>3</sup>	E1CA-ERD	6.51	c/kWh	EIEP1
		Night (Off-Peak) Charge <sup>4</sup>	E1CA-ERN	6.51	c/kWh	
		Demand Charge <sup>5</sup>	E1CA-ERL	0.00	\$/kW/month	
E1CB	B	GYT0331, HWA0331, MGM0331, MTN0331, MST0331, MTR0331, OKN0111, OPK0331, (excluding WVY0111)				
		Daily Charge	E1CB-FDC	30.00	c/day	
		Peak Charge <sup>2</sup>	E1CB-ERP	15.20	c/kWh	
		Day (Off-Peak) Charge <sup>3</sup>	E1CB-ERD	8.87	c/kWh	EIEP1
		Night (Off-Peak) Charge <sup>4</sup>	E1CB-ERN	8.87	c/kWh	
		Demand Charge <sup>5</sup>	E1CB-ERL	0.00	\$/kW/month	

1. Please note these charges are excluding GST
2. Peak Charge applies to GXP kWh quantities for Weekdays (Mon-Fri including public holidays) from 07:00-11:00 and 17:00-21:00
3. Day (Off-Peak) Charge applies to GXP kWh quantities for Weekdays (Mon-Fri including public holidays) from 11:00-17:00 and 21:00-23:00, Weekends from 07:00-23:00
4. Night (Off-Peak) Charge applies to GXP kWh quantities for Weekdays and Weekends from 23:00-07:00
5. Demand Charge set to zero from 1 April 2019

	Monday	Tuesday	Wednesday	Thursday	Friday	Saturday	Sunday
12am-7am	Night	Night	Night	Night	Night	Night	Night
7am-11am	Peak	Peak	Peak	Peak	Peak	Day	Day
11am-5pm	Day	Day	Day	Day	Day	Day	Day
5pm-9pm	Peak	Peak	Peak	Peak	Peak	Day	Day
9pm-11pm	Day	Day	Day	Day	Day	Day	Day
11pm-12am	Night	Night	Night	Night	Night	Night	Night

**Price Category: E100**  
**Commercial TOU Connections with installed capacity of 101 – 300 kVA**

Price Category Code	Zone	Description	Price Component Code	Delivery Price <sup>1</sup>	Unit of Measure	Data File Type
E100	ALL	Daily Charge	E100-FDC	9.10	\$/ICP/day	EIEP3
		HV Metering Charge <sup>2</sup>	E100-CT/VT	4.54	\$/units/day	
		Variable Charge	E100-KWH	0.0172	\$/kWh	
		Reactive Power Charge <sup>4</sup>	E100-PFC	7.00	\$/kVAr/month	
		Projected Charge	E100-KWH-PROJ	0.0172	\$/kWh	
E100	A	CST0331, HUI0331, SFD0331				
E100	B	Distribution Charge	E100-E1DISTA	0.3948	\$/kW/day	EIEP3
		Transmission Charge <sup>3</sup>	E100-E1TRANA	0.0301	\$/kW/day	
E100	B	HWA0331				
		Distribution Charge	E100-E1DISTB	0.4949	\$/kW/day	EIEP3
Transmission Charge <sup>3</sup>	E100-E1TRANB	0.0285	\$/kW/day			
E100	C	WVY0111				
		Distribution Charge	E100-E1DISTC	0.5577	\$/kW/day	EIEP3
Transmission Charge <sup>3</sup>	E100-E1TRANC	0.0834	\$/kW/day			
E100	D	OPK0331				
		Distribution Charge	E100-E1DISTD	0.5792	\$/kW/day	EIEP3
Transmission Charge <sup>3</sup>	E100-E1TRAND	0.2032	\$/kW/day			
E100	E	BRK0331, WGN0331				
		Distribution Charge	E100-E1DISTE	0.3825	\$/kW/day	EIEP3
Transmission Charge <sup>3</sup>	E100-E1TRANE	0.0321	\$/kW/day			
E100	F	MTN0331				
		Distribution Charge	E100-E1DISTF	0.4352	\$/kW/day	EIEP3
Transmission Charge <sup>3</sup>	E100-E1TRANF	0.0357	\$/kW/day			
E100	G	MTR0331, OKN0111				
		Distribution Charge	E100-E1DISTG	0.7937	\$/kW/day	EIEP3
Transmission Charge <sup>3</sup>	E100-E1TRANG	0.0608	\$/kW/day			
E100	H	MST0331, GYT0331				
		Distribution Charge	E100-E1DISTH	0.4302	\$/kW/day	EIEP3
Transmission Charge <sup>3</sup>	E100-E1TRANH	0.0327	\$/kW/day			
E100	I	BPE0331, LTN0331				
		Distribution Charge	E100-E1DISTI	0.3545	\$/kW/day	EIEP3
Transmission Charge <sup>3</sup>	E100-E1TRANI	0.0168	\$/kW/day			
E100	J	MGM0331				
		Distribution Charge	E100-E1DISTJ	0.5407	\$/kW/day	EIEP3
Transmission Charge <sup>3</sup>	E100-E1TRANJ	0.0790	\$/kW/day			

1. Please note these charges are excluding GST  
 2. HV metering charges only apply to ICPs with Powerco-owned HV metering (noted as CTVT in the Registry’s ‘Installation Details’)  
 3. Transmission Prices include Transmission charges and other recoverable costs such as council rates and industry levies  
 4. Reactive Power Charge applies to all connections – see paragraph 14.0

**Price Category: W50**

**Commercial TOU Connections typically with installed capacity of greater than 300 kVA**

Price Category Code	Zone	Description	Price Component Code	Delivery Price <sup>1</sup>	Unit of Measure	Data File Type
W50	ALL	Fixed Distribution Charge	W50-DIST	POA	\$/day	EIEP3
		Fixed Transmission Charge <sup>2</sup>	W50-TRANS	POA	\$/day	
		Variable Charge	W50-KWH	0	\$/kWh	
		Projected Charge	W50-KWH-PROJ	0	\$/kWh	
		Reactive Power Charge <sup>3</sup>	W50-PFC	7.00	\$/kVAr/month	

1. Please note these charges are excluding GST
2. Transmission Prices include Transmission charges and other recoverable costs such as council rates and industry levies
3. Reactive power charges do not apply for any ICP on a price category ending in "N"

**Price Category: SPECIAL / SPECIALN<sup>3</sup> applies to Connections on non-standard pricing**

Price Category Code	Zone	Description	Price Component Code	Delivery Price <sup>1</sup>	Unit of Measure	Data File Type
SPECIAL / SPECIALN	ALL	Fixed Distribution Charge	SPECIAL-DIST	POA	\$/day	EIEP3
		Fixed Transmission Charge <sup>2</sup>	SPECIAL-TRANS	POA	\$/day	
		Variable Charge	SPECIAL-KWH	0	\$/kWh	
		Projected Charge	SPECIAL-KWH-PROJ	0	\$/kWh	
		Reactive Power Charge <sup>3</sup>	SPECIAL-PFC	7.00	\$/kVAr/month	

1. Please note these charges are excluding GST
2. Transmission Prices include Transmission charges and other recoverable costs such as council rates and industry levies
3. Reactive power charges do not apply for any ICP on a price category ending in "N"

**20.0 Data File Requirements**

20.1 Fixed charges and variable consumption should be provided to Powerco via the EIEP1 file as follows:

Price Category Code	Description	Tariff Option	Price Component Code	Register Content Code / Period of Availability	Availability
E1CA	Daily Charge - Controlled	FDC	E1CA-FDC		
	Uncontrolled	24UC	E1CA-24UC	UN24 D16 / N8	24 hours per day
	All Inclusive	AICO	E1CA-AICO	IN17 DIN16 / NIN8	17 hours per day
	TOU Peak - Uncontrolled	PEAK	E1CA-PEAK	UN24 D16 / N8	24 hours per day
	TOU Off-Peak - Uncontrolled	OFPK	E1CA-OFPK	UN24 D16 / N8	24 hours per day
	TOU Peak – All Inclusive	PKIN	E1CA-PKIN	IN17	24 hours per day
	TOU Off-Peak – All Inclusive	OPIN	E1CA-OPIN	IN17	24 hours per day
	Controlled	CTRL	E1CA-CTRL	CN17	17 hours per day
	Night Only	NITE	E1CA-NITE	CN8 & NO8	23:00 - 07:00
	Night with Boost <sup>1</sup>	NITE	E1CA-NITE	CN9 & NB9	23:00 - 07:00 14:00 - 15:00
	Unmetered	UNML	E1CA-UNML		
	Distributed Generation	24DG	E1CA-24DG	EG24	24 hours per day

Price Category Code	Description	Tariff Option	Price Component Code	Register Content Code / Period of Availability	Availability
E1CB	Daily Charge - Controlled	FDC	E1CB-FDC		
	Uncontrolled	24UC	E1CB-24UC	UN24 D16 / N8	24 hours per day
	All Inclusive	AICO	E1CB-AICO	IN17 DIN16 / NIN8	17 hours per day
	TOU Peak - Uncontrolled	PEAK	E1CB-PEAK	UN24 D16 / N8	24 hours per day
	TOU Off-Peak - Uncontrolled	OFPK	E1CB-OFPK	UN24 D16 / N8	24 hours per day
	TOU Peak – All Inclusive	PKIN	E1CB-PKIN	IN17	24 hours per day
	TOU Off-Peak – All Inclusive	OPIN	E1CB-OPIN	IN17	24 hours per day
	Controlled	CTRL	E1CB-CTRL	CN17	17 hours per day
	Night Only	NITE	E1CB-NITE	CN8 & NO8	23:00 - 07:00
	Night with Boost <sup>1</sup>	NITE	E1CB-NITE	CN9 & NB9	23:00 - 07:00 14:00 - 15:00
	Unmetered	UNML	E1CB-UNML		
	Distributed Generation	24DG	E1CB-24DG	EG24	24 hours per day
E1UCA	Daily Charge - Uncontrolled	FDC	E1UCA-FDC		
	Uncontrolled	24UC	E1UCA-24UC	UN24 D16 / N8	24 hours per day
	TOU Peak – Uncontrolled	PEAK	E1UCA-PEAK	UN24 D16 / N8	24 hours per day
	TOU Off-Peak - Uncontrolled	OFPK	E1UCA-OFPK	UN24 D16 / N8	24 hours per day
	Night Only	NITE	E1UCA-NITE	CN8 & NO8	23:00 - 07:00
	Night with Boost <sup>1</sup>	NITE	E1UCA-NITE	CN9 & NB9	23:00 - 07:00 14:00 - 15:00
	Unmetered	UNML	E1UCA-UNML		
	Distributed Generation	24DG	E1UCA-24DG	EG24	24 hours per day
E1UCB	Daily Charge - Uncontrolled	FDC	E1UCB-FDC		
	Uncontrolled	24UC	E1UCB-24UC	UN24 D16 / N8	24 hours per day
	TOU Peak - Uncontrolled	PEAK	E1UCB-PEAK	UN24 D16 / N8	24 hours per day
	TOU Off-Peak - Uncontrolled	OFPK	E1UCB-OFPK	UN24 D16 / N8	24 hours per day
	Night Only	NITE	E1UCB-NITE	CN8 & NO8	23:00 - 07:00
	Night with Boost <sup>1</sup>	NITE	E1UCB-NITE	CN9 & NB9	23:00 - 07:00 14:00 - 15:00
	Unmetered	UNML	E1UCB-UNML		
	Distributed Generation	24DG	E1UCB-24DG	EG24	24 hours per day

1. Boost is not available in all areas, and is closed to new connections and meter replacements – refer to paragraphs 34.0 & 35.0

Note: AICO is now closed to new connections and existing connections with a meter replacement as per paragraph 32.0

# Eastern Region





See overleaf for a detailed map of our Eastern Region Electricity Network.



## Electricity networks

This diagram shows the regions supplied by Powerco's electricity distribution networks. These regions are based on the approximate grid exit point connectivity and should be considered as indicative only.

-  Tauranga
-  Valley



## Part C: Eastern Region

### 21.0 Application

21.1 This part applies to the Eastern Region Network only

### 22.0 Price Categories: Tauranga Distribution Network

22.1 The Tauranga Distribution Network Price Categories and Tariff Options described below are subject to the conditions set out in paragraphs 23.0, 26.0 to 30.0, and elsewhere in this document

22.2 A Retailer supplying a Consumer may change that Consumer from a Price Category or a Tariff Option to another Price Category or Tariff Option only once in any period of 12 consecutive months. For example, a residential Consumer changing to a Low Fixed Charge Price Category from a General Price Category and changing back to a General Price Category within a 12-month period would incur a Price Category Change Fee as set out in paragraph 8.1.

22.3 Tauranga Distribution Network Time Zone Definitions:

Tauranga Distribution Network	
Day	07:00am – 11:00pm
Night	11:00pm – 07:00am
TOU Peak Period	Weekdays (Monday-Friday including public holidays) 07:00am–11:00am (periods 15 to 22) and 5:00pm – 9:00pm (periods 35 to 42)
TOU Off-Peak Period	Weekdays (Monday-Friday including public holidays) 11:00am – 5:00pm (periods 23 to 34) and 9:00pm – 7:00am (periods 43 to 14) Weekends (Saturday & Sunday) all day and night

	Monday	Tuesday	Wednesday	Thursday	Friday	Saturday	Sunday
12am-7am	Night	Night	Night	Night	Night	Night	Night
7am-11am	Peak	Peak	Peak	Peak	Peak	Day	Day
11am-5pm	Day	Day	Day	Day	Day	Day	Day
5pm-9pm	Peak	Peak	Peak	Peak	Peak	Day	Day
9pm-11pm	Day	Day	Day	Day	Day	Day	Day
11pm-12am	Night	Night	Night	Night	Night	Night	Night

## 23.0 Tauranga Price Categories and Prices

Price Category Code	Description	Price Component Code	Register Content Code/ Period of Availability	Data File Format Availability	Delivery Price <sup>1</sup>	Unit of Measure
<b>T01</b>	<b>Unmetered Load<sup>2</sup></b>			<i>EIEP1</i>		
	Daily Charge	T01			45.00	c/day
	Variable Charge	T01-UNML			11.67	c/kWh
	Projected Charge	T01-UNML-PROJ			11.67	c/kWh
<b>T02</b>	<b>Unmetered Streetlights (NZTA / Council only)</b>			<i>EIEP1</i>		
	Daily Charge	T02			20.23	c/fixture/day
	Variable Charge	T02-UNML			0.00	c/kWh
<b>T05S<sup>3</sup></b>	<b>Residential Low Fixed Charges</b>			<i>EIEP1</i>		
	Daily Charge	T05S			45.00	c/day
	Uncontrolled	T05S-24UC	UN24 D16 / N8	24 hrs per day	8.74	c/kWh
	All Inclusive <sup>6</sup>	T05S-AICO	IN17 DIN16 / NIN8	17 hrs per day	8.74	c/kWh
	Controlled	T05S-CTRL	CN17	17 hrs per day	6.14	c/kWh
	Night Only	T05S-NITE	CN8 & NO8	23:00-07:00	6.14	c/kWh
	Night with Boost	T05S-NITE	CN9 & NB9	23:00-07:00 14:00 -14:30	6.14	c/kWh
	Unmetered	T05S-UNML			11.67	c/kWh
	Distributed Generation	T05S-24DG	EG24	24 hrs per day	0.00	c/kWh
	Projected Charge	T05S-24UC-PROJ			8.74	c/kWh
	TOU Peak <sup>7</sup> - Uncontrolled	T05S-PEAK	UN24 / 7304	24 hrs per day	14.26	c/kWh
	TOU Off-Peak <sup>7</sup> - Uncontrolled	T05S-OFPK	UN24 / 7304	24 hrs per day	6.14	c/kWh
	TOU Peak <sup>7</sup> - All Inclusive	T05S-PKIN	IN17 / 7304	24 hrs per day	14.26	c/kWh
	TOU Off-Peak <sup>7</sup> – All Inclusive	T05S-OPIN	IN17 / 7304	24 hrs per day	6.14	c/kWh
<b>T06S</b>	<b>General (up to and including 3 Phase 60 amps)</b>			<i>EIEP1</i>		
	Daily Charge	T06S			106.00	c/day
	Uncontrolled	T06S-24UC	UN24 D16 / N8	24 hrs per day	5.95	c/kWh
	All Inclusive <sup>6</sup>	T06S-AICO	IN17 DIN16 / NIN8	17 hrs per day	5.95	c/kWh
	Controlled	T06S-CTRL	CN17	17 hrs per day	3.35	c/kWh
	Night Only	T06S-NITE	CN8 & NO8	23:00-07:00	3.35	c/kWh
	Night with Boost	T06S-NITE	CN9 & NB9	23:00 - 07:00 14:00 - 14:30	3.35	c/kWh
	Unmetered	T06S-UNML			11.67	c/kWh
	Distributed Generation	T06S-24DG	EG24	24 hrs per day	0.00	c/kWh
	Projected Charge	T06S-24UC-PROJ			5.95	c/kWh
	TOU Peak <sup>7</sup> – Uncontrolled	T06S-PEAK	UN24 / 7304	24 hrs per day	11.47	c/kWh
	TOU Off-Peak <sup>7</sup> - Uncontrolled	T06S-OFPK	UN24 / 7304	24 hrs per day	3.35	c/kWh
	TOU Peak <sup>7</sup> - All Inclusive	T06S-PKIN	IN17 / 7304	24 hrs per day	11.47	c/kWh
	TOU Off-Peak <sup>7</sup> – All Inclusive	T06S-OPIN	IN17 / 7304	24 hrs per day	3.35	c/kWh

Price Category Code	Description	Price Component Code	Register Content Code/ Period of Availability	Data File Format Availability	Delivery Price <sup>1</sup>	Unit of Measure
<b>T22</b>	<b>Commercial (Greater than 3 Phase 60amps to 3 phase 250 amps)</b>		<i>EIEP1</i>			
	Daily Charge	T22			11.98	\$/day
	Uncontrolled	T22-24UC	UN24 D16 / N8	24 hrs per day	5.92	c/kWh
	Controlled	T22-CTRL	CN17	17 hours per day	3.63	c/kWh
	Night Only	T22-NITE	CN8 & NO8	23:00 - 07:00	3.91	c/kWh
	TOU Peak <sup>7</sup> - Uncontrolled	T22-PEAK	UN24 / 7304	24 hrs per day	11.40	c/kWh
	TOU Off-Peak <sup>7</sup> - Uncontrolled	T22-OFPK	UN24 / 7304	24 hrs per day	3.34	c/kWh
	Distributed Generation	T22-24DG	EG24	24 hrs per day	0.00	c/kWh
	Projected Charge	T22-24UC-PROJ			5.92	c/kWh
<b>T28 / T28N<sup>4,10</sup></b>	<b>Commercial (200 – 299 kVA)</b>		<i>EIEP3</i>			
	Daily Charge	T28			27.08	\$/day
	Uncontrolled	T28-24UC		24 hrs per day	5.70	c/kWh
	Reactive Power Charge <sup>4</sup>	T28-PFC			7.00	\$/kVAr/mth
	Distributed Generation	T28N-24DG	EG24	24 hrs per day	0.00	c/kWh
	Projected Charge	T28-24UC-PROJ			5.70	c/kWh
<b>T50 / T50N<sup>4,9</sup></b>	<b>Large Commercial (300 – 1,499 kVA)</b>		<i>EIEP3</i>			
	Distribution Charge	T50-DIST			POA	\$/day
	Transmission Charge <sup>5</sup>	T50-TRANS			POA	\$/day
	Variable Charge	T50-KWH			0.00	\$/kWh
	Reactive Power Charge <sup>4</sup>	T50-PFC			7.00	\$/kVAr/mth
<b>T60 / T60N<sup>4</sup></b>	<b>Large Commercial (≥ 1,500 kVA)</b>		<i>EIEP3</i>			
	Distribution Charge	T60-DIST			POA	\$/day
	Transmission Charge <sup>5</sup>	T60-TRANS			POA	\$/day
	Variable Charge	T60-KWH			0.00	\$/kWh
	Reactive Power Charge <sup>4</sup>	T60-PFC			7.00	\$/kVAr/mth

1. Please note these charges are excluding GST

2. Please refer to the Eastern unmetered supply schedule for additional information for unmetered ICP charges

3. These Price Categories and associated Tariff Options are only available to Residential Connections subject to the relevant conditions

4. Reactive power charges do not apply for any ICP on a Price Category ending in "N"

5. Transmission Prices include Transmission charges and other recoverable costs such as council rates and industry levies

6. AICO is now closed as per paragraph 32.0

7. TOU Peak and Off-Peak times defined in paragraph 22.3

8. Conditional tariff options are only available for retailers who have been granted an exemption to TOU charges

9. Effective 1 April 2020, T50 and T50N ICPs are subject to a minimum AMD of 100 kW. See paragraph 30.4 for details

10. The T24 and T24N Price Categories were replaced by T28 and T28N effective 1 April 2021

## 24.0 Price Categories: Valley Distribution Network

- 24.1 The Valley Distribution Network Price Categories and Tariff Options described below are subject to the conditions set out in paragraphs 25.0, 26.0 to 30.0, and elsewhere in this document
- 24.2 A Retailer supplying a Consumer may change that Consumer from a Price Category or a Tariff Option to another Price Category or Tariff Option only once in any period of 12 consecutive months. For example, a residential Consumer changing to a Low Fixed Charge Price Category from a General Price Category and changing back to a General Price Category within a 12-month period would incur a Price Category Change Fee as set out in paragraph 8.1.
- 24.3 Valley Distribution Network Time Zone Definitions:

Valley Distribution Network	
Day	07:00am – 11:00pm
Night	11:00pm – 07:00am
TOU Peak Period	Weekdays (Monday-Friday including public holidays) 07:00am–11:00am (periods 15 to 22) and 5:00pm – 9:00pm (periods 35 to 42)
TOU Off-Peak Period	Weekdays (Monday-Friday including public holidays) 11:00am – 5:00pm (periods 23 to 34) and 9:00pm – 7:00am (periods 43 to 14) Weekends (Saturday & Sunday) all day and night

	Monday	Tuesday	Wednesday	Thursday	Friday	Saturday	Sunday
12am-7am	Night	Night	Night	Night	Night	Night	Night
7am-11am	Peak	Peak	Peak	Peak	Peak	Day	Day
11am-5pm	Day	Day	Day	Day	Day	Day	Day
5pm-9pm	Peak	Peak	Peak	Peak	Peak	Day	Day
9pm-11pm	Day	Day	Day	Day	Day	Day	Day
11pm-12am	Night	Night	Night	Night	Night	Night	Night

## 25.0 Valley Price Categories and Prices

Price Category Code	Description	Price Component Code	Register Content Code/ Period of Availability	Data File Format Availability	Delivery Price <sup>1</sup>	Unit of Measure
<b>V01</b>	<b>Unmetered Load<sup>2</sup></b>			<i>EIEP1</i>		
	Daily Charge	V01			45.00	c/day
	Variable Charge	V01-UNML			12.91	c/kWh
	Projected Charge	V01-UNML-PROJ			12.91	c/kWh
<b>V02</b>	<b>Unmetered Streetlights (NZTA / Council only)</b>			<i>EIEP1</i>		
	Daily Charge	V02			19.13	c/fixture/day
	Variable Charge	V02-UNML			0.00	c/kWh
<b>V05S<sup>3</sup></b>	<b>Residential Low Fixed Charges</b>			<i>EIEP1</i>		
	Daily Charge	V05S			45.00	c/day
	Uncontrolled	V05S-24UC	UN24 D16 / N8	24 hrs per day	10.33	c/kWh
	All Inclusive <sup>6</sup>	V05S-AICO	IN17 DIN16 / NIN8	17 hrs per day	10.33	c/kWh
	Controlled	V05S-CTRL	CN17	17 hrs per day	7.45	c/kWh
	Night Only	V05S-NITE	CN8 & NO8	23:00-07:00	7.45	c/kWh
	Unmetered	V05S-UNML			12.91	c/kWh
	Distributed Generation	V05S-24DG	EG24	24 hrs per day	0.00	c/kWh
	Projected Charge	V05S-24UC-PROJ			10.33	c/kWh
	TOU Peak <sup>7</sup> - Uncontrolled	V05S-PEAK	UN24 / 7304	24 hrs per day	16.73	c/kWh
	TOU Off-Peak <sup>7</sup> - Uncontrolled	V05S-OFPK	UN24 / 7304	24 hrs per day	7.45	c/kWh
	TOU Peak <sup>7</sup> - All Inclusive	V05S-PKIN	IN17 / 7304	24 hrs per day	16.73	c/kWh
	TOU Off-Peak <sup>7</sup> - All Inclusive	V05S-OPIN	IN17 / 7304	24 hrs per day	7.45	c/kWh
<b>V06S</b>	<b>General (up to and including 3 Phase 60 amps)</b>			<i>EIEP1</i>		
	Daily Charge	V06S			111.00	c/day
	Uncontrolled	V06S-24UC	UN24 D16 / N8	24 hrs per day	7.32	c/kWh
	All Inclusive <sup>6</sup>	V06S-AICO	IN17 DIN16 / NIN8	17 hrs per day	7.32	c/kWh
	Controlled	V06S-CTRL	CN17	17 hrs per day	4.44	c/kWh
	Night Only	V06S-NITE	CN8 & NO8	23:00-07:00	4.44	c/kWh
	Unmetered	V06S-UNML			12.91	c/kWh
	Distributed Generation	V06S-24DG	EG24	24 hrs per day	0.00	c/kWh
	Projected Charge	V06S-24UC-PROJ			7.32	c/kWh
	TOU Peak <sup>7</sup> - Uncontrolled	V06S-PEAK	UN24 / 7304	24 hrs per day	13.72	c/kWh
	TOU Off-Peak <sup>7</sup> - Uncontrolled	V06S-OFPK	UN24 / 7304	24 hrs per day	4.44	c/kWh
	TOU Peak <sup>7</sup> - All Inclusive	V06S-PKIN	IN17 / 7304	24 hrs per day	13.72	c/kWh
	TOU Off-Peak <sup>7</sup> - All Inclusive	V06S-OPIN	IN17 / 7304	24 hrs per day	4.44	c/kWh
<b>V08<sup>11</sup></b>	<b>Temporary Accommodation</b>			<i>EIEP1</i>		
	Daily Charge	V08			125.00	c/day

Price Category Code	Description	Price Component Code	Register Content Code/ Period of Availability	Data File Format Availability	Delivery Price <sup>1</sup>	Unit of Measure
	Uncontrolled	V08-24UC	UN24 D16 / N8	24 hrs per day	6.67	c/kWh
	All Inclusive <sup>6</sup>	V08-AICO	IN17 DIN16 / NIN8	17 hrs per day	6.67	c/kWh
	Controlled	V08-CTRL	CN17	17 hrs per day	3.49	c/kWh
	Night Only	V08-NITE	CN8 & NO8	23:00-07:00	3.49	c/kWh
	Unmetered	V08-UNML			12.91	c/kWh
	Distributed Generation	V08-24DG	EG24	24 hrs per day	0.00	c/kWh
	Projected Charge	V08-24UC-PROJ			6.67	c/kWh
	TOU Peak <sup>7</sup> - Uncontrolled	V08-PEAK	UN24 / 7304	24 hrs per day	13.71	c/kWh
	TOU Off-Peak <sup>7</sup> - Uncontrolled	V08-OFPK	UN24 / 7304	24 hrs per day	3.49	c/kWh
	TOU Peak <sup>7</sup> - All Inclusive	V08-PKIN	IN17 / 7304	24 hrs per day	13.71	c/kWh
	TOU Off-Peak <sup>7</sup> - All Inclusive	V08-OPIN	IN17 / 7304	24 hrs per day	3.49	c/kWh
<b>V22<sup>10</sup></b>	<b>Commercial (greater than 3 Phase 60amps to 3 phase 250 amps)</b>			<i>EIEP1</i>		
	Daily Charge	V22			12.64	\$/day
	Uncontrolled	V22-24UC	UN24 D16 / N8	24 hrs per day	6.94	c/kWh
	TOU Peak <sup>7</sup> - Uncontrolled	V22-PEAK	UN24 / 7304	24 hrs per day	12.93	
	TOU Off-Peak <sup>7</sup> - Uncontrolled	V22-OFPK	UN24 / 7304	24 hrs per day	4.25	
	Distributed Generation	V22-24DG	EG24	24 hrs per day	0.00	c/kWh
	Projected Charge	V22-24UC-PROJ			6.94	c/kWh
<b>V28 / V28N<sup>4</sup></b>	<b>Commercial (200 – 299 kVA)</b>			<i>EIEP3</i>		
	Daily Charge	V28			29.08	\$/day
	Uncontrolled	V28-24UC		24 hrs per day	6.28	c/kWh
	Reactive Power Charge <sup>4</sup>	V28-PFC			7.00	\$/kVAr/mth
	Distributed Generation	V28N-24DG	EG24	24 hrs per day	0.00	c/kWh
	Projected Charge	V28-24UC-PROJ			6.28	c/kWh
<b>V40 / V40N<sup>4,9</sup></b>	<b>Large Commercial (300 – 1,499 kVA)</b>			<i>EIEP3</i>		
	Distribution Charge	V40-DIST			POA	\$/day
	Transmission Charge <sup>5</sup>	V40-TRANS			POA	\$/day
	Variable Charge	V40-KWH			0.00	\$/kWh
	Reactive Power Charge <sup>4</sup>	V40-PFC			7.00	\$/kVAr/mth
<b>V60 / V60N<sup>4</sup></b>	<b>Large Commercial (≥ 1,500 kVA)</b>			<i>EIEP3</i>		
	Distribution Charge	V60-DIST			POA	\$/day
	Transmission Charge <sup>5</sup>	V60-TRANS			POA	\$/day
	Variable Charge	V60-KWH			0.00	\$/kWh
	Reactive Power Charge <sup>4</sup>	V60-PFC			7.00	\$/kVAr/mth

1. Please note these charges are excluding GST

2. Please refer to the Eastern unmetered supply schedule for additional information for unmetered ICP charges

3. These Price Categories and associated prices are only available to Residential Connections, subject to the relevant conditions

4. Reactive power charges do not apply for any ICP on a Price Category ending in “N”
5. Transmission Prices include Transmission charges and other recoverable costs such as council rates and industry levies
6. AICO is now closed as per paragraph 32.0
7. TOU Peak and Off-Peak times defined in paragraph 24.3
8. Conditional tariff options are only available for retailers who have been granted an exemption to TOU charges
9. Effective 1 April 2020, V40 and V40N ICPs are subject to a minimum AMD of 100 kW. See paragraph 30.4 for details
10. The V24 Price Category was replaced by V22 effective 1 April 2021, to align with T22 in the Tauranga
11. These Price Categories and associated prices are only available to Temporary Accommodation, subject to the relevant conditions

## 26.0 Data File Requirements

26.1 Variable consumption should be provided to Powerco as follows:

Price Category	Tariff Option	EIEP1 Data file should contain	Data file type required
T05S	NITE	T05S-NITE	EIEP1
	24UC	T05S-24UC	
	CTRL	T05S-CTRL	
	AICO	T05S-AICO	
	UNML	T05S-UNML	
	24DG	T05S-24DG	
	PEAK	T05S-PEAK	
	OFPK	T05S-OFPK	
	PKIN	T05S-PKIN	
	OPIN	T05S-OPIN	
T06S	NITE	T06S-NITE	EIEP1
	24UC	T06S-24UC	
	CTRL	T06S-CTRL	
	AICO	T06S-AICO	
	UNML	T06S-UNML	
	24DG	T06S-24DG	
	PEAK	T06S-PEAK	
	OFPK	T06S-OFPK	
	PKIN	T06S-PKIN	
	OPIN	T06S-OPIN	
T22	24UC	T22-24UC	EIEP1
	CTRL	T22-CTRL	
	NITE	T22-NITE	
	PEAK	T22-PEAK	
	OFPK	T22-OFPK	
	24DG	T22-24DG	
T28N	24UC	T28N-24UC	EIEP1
	24DG	T28N-24DG	
V05S	NITE	V05S-NITE	EIEP1
	24UC	V05S-24UC	
	CTRL	V05S-CTRL	
	AICO	V05S-AICO	
	UNML	V05S-UNML	
	24DG	V05S-24DG	
	PEAK	V05S-PEAK	
	OFPK	V05S-OFPK	
	PKIN	V05S-PKIN	
	OPIN	V05S-OPIN	

Price Category	Tariff Option	EIEP1 Data file should contain	Data file type required
V06S	NITE	V06S-NITE	EIEP1
	24UC	V06S-24UC	
	CTRL	V06S-CTRL	
	AICO	V06S-AICO	
	UNML	V06S-UNML	
	24DG	V06S-24DG	
	PEAK	V06S-PEAK	
	OFPK	V06S-OFPK	
	PKIN	V06S-PKIN	
	OPIN	V06S-OPIN	
V08	NITE	V08-NITE	EIEP1
	24UC	V08-24UC	
	CTRL	V08-CTRL	
	AICO	V08-AICO	
	UNML	V08-UNML	
	24DG	V08-24DG	
	PEAK	V08-PEAK	
	OFPK	V08-OFPK	
	PKIN	V08-PKIN	
	OPIN	V08-OPIN	
V22	24UC	V22-24UC	EIEP1
	PEAK	V22-PEAK	
	OFPK	V22-OFPK	
	24DG	V22-24DG	
V28N	24UC	V28N-24UC	EIEP1
	24DG	V28N-24DG	

**27.0 Conditions: Builder’s Temporary Supply**

- 27.1 In the Eastern Region, builder’s supply Connections must only be the Price Categories “T06S” or “V06S” or higher as applicable. Powerco will not accept these Connections on the Price Categories “T05S” or “V05S” as builder’s supplies are not considered Residential Connections.
- 27.2 Powerco will not accept temporary builder’s supplies Connections as unmetered Connections
- 27.3 Powerco requires an ICP for each and every temporary connection. Therefore, sites with multiple temporary supplies require separate ICPs to be established for each point of connection.
- 27.4 Builder’s Temporary Supplies are available for a period of up to six months

**28.0 Conditions: Low Fixed Charge Price Categories and Tariff Options**

- 28.1 The Low Fixed Charge Price Categories for the Eastern Region (T05S and V05S) are only available:
  - (a) For Residential Connections that are supplied electricity;
  - (b) In conjunction with the Retailer’s Consumer Low-Usage Tariff Option that complies with the requirements of the Electricity (Low Fixed Tariff Option for Domestic Consumers) Regulations 2004;



- (c) If the Distributor's prior approval (that approval not to be unreasonably withheld) of the Retailer's process for ascertaining that the relevant Consumer is eligible for the Low Usage Tariff Option has been given;

Subject to the condition that if the Distributor becomes aware that a Low-Usage Tariff Option has been made available to, or is being applied by, a Retailer other than in accordance with this paragraph, the Distributor may remove the relevant Consumer from the Low-Usage Tariff Option to another Price Category and adjust the charges accordingly.

Such adjustment to the charges may include recovery from the Retailer of any underpayment by the Retailer resulting from the Low-Usage Tariff Option being applied other than in accordance with this Pricing Schedule, together with interest, calculated at the Interest Rate on the first day of the period during which the Low-Usage Tariff Option was incorrectly applied, until the day on which the underpayment is recovered by the Distributor.

## 29.0 Conditions: Temporary Accommodation

29.1 The Price Category V08 is available only for Connections that:

- (a) Meet the definition of Temporary Accommodation
- (b) Are supplied from Kopu GXP
- (c) Have a total connected capacity of less than 15kVA (typically less than or equal to 1ph63A, 3ph20A or equivalent)

## 30.0 Conditions: Asset-Specific Delivery Charges

- 30.1 Asset-specific Delivery Charges will apply to Consumers that have installed capacity of 300 kVA or greater, but may also be applied to smaller Connections where applicable – for instance if a backup supply is required, or there is significant generation at the site
- 30.2 Daily charges for Price Categories V40, V60, T50 and T60 are subject to periodic review based on site-specific information, including electricity demand and volume data
- 30.3 Asset-Specific Delivery Charges (V40, V60, T50 and T60) charged pursuant to the Network Agreement will be disclosed upon request to the Consumer to which these charges apply, or to the Consumer's current Retailer
- 30.4 As of 1 April 2020, the chargeable AMD for the V40 and T50 Price Categories is 100 kW or the actual demand, whichever is the higher. This change introduced a minimum demand level (consistent with the methodology in Powerco's Western Region), which ensures the cost of providing upstream distribution capacity is adequately recovered.

**PAGE INTENTIONALLY LEFT BLANK**

# Meter configuration





## Part D: Meter Configuration

### 31.0 Controlled Price Category and Price Components

31.1 For the Western and Eastern Regions:

- (a) Consumers allocated to a Controlled Price Category or Controlled Tariff Option will have their load controlled by:
  - I. The Distributor:
    - For the purposes of grid and network security;
    - For the purposes of optimising transmission charges; or
    - In abnormal supply or operating circumstances (eg a shortage or anticipated shortage of electricity); and
  - II. The Distributor, acting on the instruction of the Instructing Retailer within these areas for other purposes
- (b) If the Retailer is not agreeable to its Consumers' load being controlled by the Distributor for the purposes and in the circumstances set out above, the Retailer must choose or request the Distributor to allocate the Consumer to an Uncontrolled Price Category or Uncontrolled Tariff Option.
- (c) All Consumers in Controlled Price Categories or Controlled Tariff Options have, via their Retailer, agreed to assign to the Distributor the whole of the right to control the load (for whatever purpose)

31.2 To be eligible for the Controlled Price Category or Controlled Tariff Option, the Retailer must ensure that the Consumer has Load Control Equipment that:

- (a) Is, and will continue to be, in working order;
- (b) When in operation, will result in a reduction in the Consumer's demand, where such load reduction is instantaneously available at the time of load-shedding operation. For example, by controlling the supply of electricity to those of the Consumer's goods (including, without limitation, Consumer goods or capital goods) that consume or intend to consume electricity to be controlled;
- (c) Will be activated by the Distributor's load-signalling equipment (both pilot wire (cascade) and ripple control signalling equipment);
- (d) Will not block or interfere with the Distributor's load-signalling equipment; and
- (e) Does not solely consist of a controlled Night meter.

31.3 No Controlled Price Category or Controlled Tariff Option is available at those GXPs where the Distributor does not have operational Load Control Equipment.

31.4 Examples of Consumer appliances for a Controlled Tariff Option can include but are not limited to:

- Hot water cylinders;
- Electric kilns, or;
- Any appliances representing a significant proportion of the Consumer's demand that may be controlled without increasing the Consumer's uncontrolled demand.

### **32.0 All Inclusive (AICO)**

32.1 The "All Inclusive" metering configuration and tariff option (AICO) is closed for all new connections from April 2017, noting that:

- The AICO tariff option is still available for any connections with a meter installed prior to 1 April 2017;
- For any subsequent meter replacement after this date, the existing "All Inclusive" metering configuration must be replaced with an equivalent "Uncontrolled" and "Controlled" metering configuration.
- The Distributor may apply the equivalent uncontrolled Price Category if "All Inclusive" metering is installed.

### **33.0 Night (NITE) Only Supply**

33.1 For an ICP to be eligible for the night only supply (NITE) Tariff Option, the following additional eligibility criteria applies and must be satisfied:

- (a) The load on the consumer appliances to be controlled are permanently wired and recorded onto a separate meter (the "NITE" supply meter) or to a separate element with a single register on an advanced meter and such element is connected to a ripple control relay;
- (b) No uncontrolled appliances are connected to the NITE supply meter; and
- (c) The Load Control Equipment, when in operation, must reduce the load connected to the NITE supply meter to zero.

## 34.0 Existing Load Control Signals by Region

GXP	CN8 NO8	CN9 NB9	CN17 / IN17 DIN16 / NIN8	CN23
<b>EASTERN REGION – TAURANGA</b>				
Tauranga (TGA0111 and TGA0331)	✓	✓	✓	✓
Mt Maunganui (MTM0331)	✓	✓	✓	✓
Te Matai (TMI0331)	✓	✓	✓	✓
Kaitemako (KMO0331)	✓	✓	✓	✓
<b>EASTERN REGION – VALLEY</b>				
Arapuni (ARI1101)	✓	✗	✓	✗
Hinuera (HIN0331)	✓	✗	✓	✗
Kinleith (KIN0331 & KIN0112)	✓	✗	✓	✗
Kopu (KPU0661)	✓	✗	✓	✗
Piako (PAO1101)	✓	✗	✓	✗
Waihou (WHU0331)	✓	✗	✓	✗
Waikino (WKO0331)	✓	✗	✓	✗
<b>WESTERN REGION – WAIRARAPA</b>				
Greytown (GYT0331)	✓	✓	✓	✗
Masterton (MST0331)	✓	✓	✓	✗
<b>WESTERN REGION – MANAWATU</b>				
Bunnythorpe (BPE0331)	✓	✓	✓	✗
Linton (LTN0331)	✓	✓	✓	✗
Mangamaire (MGM0331)	✓	✗	✓	✗
<b>WESTERN REGION – TARANAKI</b>				
Carrington (CST0331)	✓	✓	✓	✗
Huirangi (HUI0331)	✓	✗	✓	✗
Hawera (HWA0331)	✓	✓	✓	✗
Opunake (OPK0331)	✓	✓	✓	✗
Stratford (SFD0331)	✓	✗	✓	✗
<b>WESTERN REGION – WHANGANUI</b>				
Brunswick (BRK0331)	✓	✗	✓	✗
Marton (MTN0331)	✓	✗	✓	✗
Mataroa (MTR0331)	✓	✗	✓	✗
Ohakune (OKN0111)	✓	✗	✓	✗
Wanganui (WGN0331)	✓	✗	✓	✗
Waverley (WVY0111)	-	-	-	-

- ✓ Control signal available
- ✗ Control Signal not available
- No load control available

Note: Metering configuration code CN9 / NB9 is closed to new connections.  
 Note: CN23 is closed to new connections including meter replacements

## 35.0 Tariff Option Descriptions & Conditions

Tariff Description	Tariff Option	Register Content Code	Description
Uncontrolled	24UC	UN24 D16 / N8	A 24-hour continuous supply Also applies for both registers on Day/Night meters (with or without associated controllable load)
All-inclusive single meter option – refer to conditions in paragraph 32.0	AICO	IN17 DIN16 / NIN8	A 24-hour supply and a mandatory additional controllable supply. Available only for single meter, single register configurations. If the single meter has two registers, then consumption must be submitted as 24UC and CTRL. Under normal supply circumstances, electricity is usually available to controlled Consumer appliances for at least 17 hours per day. Under abnormal supply or operating circumstances (eg where there is a shortage or anticipated shortage of electricity) control of the controllable supply may be for greater than seven hours per day (eg 22 hours per day). If no additional controllable supply, the ICP must be allocated as 24UC
TOU Peak / Off-peak - Uncontrolled	PEAK / OFPK	UN24 / 7304	Refer "Uncontrolled" description
TOU Peak / Off-peak – All Inclusive	PKIN / OPIN	IN17 / 7304	Refer "All Inclusive" description
Controlled	CTRL	CN17  CN23	Electricity under normal supply circumstances is usually available for at least 17 hours per day Under abnormal supply or operating circumstances (eg where there is a shortage or anticipated shortage of electricity), control may be for greater than seven hours per day (eg 22 hours per day) CN23 closed to new connections including meter replacements
Night supply only	NITE	CN8 NO8	Available only for appliances permanently wired to a separate meter. Controlled option with power between the hours of 2300 to 0700. Consumer's with separately controlled Night meters and no other form of controllable supply are not eligible for a Controlled Price Category.
Night with boost  Closed to new connections.	NITE	CN9 NB9	Available only for appliances permanently wired to a separate meter  Controlled option with power between the hours of 2300 to 0700, plus a minimum "boost period" of 60 minutes, generally between 14:00-15:00  Appliances must not draw current outside of these hours  Consumer's with separately controlled Night meters and no other form of controllable supply are not eligible for a Controlled Price Category
Distributed Generation	24DG	EG24	Available only to Connections that are capable of exporting onto the Distributor's Network and do not have Time of Use Meters. This Tariff Option is to only apply to the separately metered export volumes. To be eligible for this Tariff Option the connection must comply with the Distributors Distributed Generation policy (per paragraph 9.0).

## 36.0 Metering Requirements

- 36.1 Eastern Region Network: Consumers with a capacity of greater than or equal to 200 kVA must have appropriate TOU Metering
- 36.2 Western Region Network: Consumers with a capacity of greater than or equal to 101 kVA must have appropriate TOU Metering



## 37.0 Meter Register Code Reporting

- 37.1 Within each Price Category, there may be more than one variable charge available for use. For each Price Category there will be a unique Tariff Option with a unique meter register code.

For some Price Categories it will be possible for a Consumer to be connected to multiple supply options, each with its own meter register. Such an ICP will have one Price Component Code for each unique meter register code.

Each monthly volume quantity submitted will then incorporate, for that ICP, a volume for each selected variable Delivery Charge category. Each volume will then be associated with a Tariff Option (AICO, CTRL, 24UC, NITE, etc).

- 37.2 For the V40, V60, T50 or T60 Price Categories, volumes are to be submitted monthly via the EIEP3 file format
- 37.3 If volume for Price Categories other than V40, V60, V71, T50 or T60 is submitted under the "KWH" Tariff Option, this volume will be charged at the highest value in the available Tariff Option for that Price Category, generally 24UC

**PAGE INTENTIONALLY LEFT BLANK**

---

# Streetlights / Unmetered supply





## Part E: Streetlights / Unmetered Supply

### 38.0 Introduction

38.1 Unmetered supply charges are detailed in paragraphs 19.0, 23.0 and 25.0. This section provides Retailers with information relating to charging unmetered ICPs

### 39.0 Western Region

39.1 The Western Region has GXP-based pricing and, as such, unmetered volumes are included in the reconciled volumes. This negates the need for specific unmetered charges in this pricing region. However, Powerco does require streetlight information in relation to streetlights, and Retailer’s obligations are detailed in paragraph 39.2.

39.2 Unmetered Streetlights:

- (a) Powerco must receive (on a monthly basis) the streetlight or other unmetered load database from the Retailer, or council / New Zealand Transport Agency (NZTA) (or both) as agreed, by the fourth working day of the calendar month
- (b) Where Powerco has not received the streetlight database as required, or no longer holds confidence in the quantities detailed by the Retailer or council / NZTA (or both), Powerco will estimate, on a reasonable endeavours basis, the light fitting quantity
- (c) Where the data is found to not be an accurate reflection of the streetlights that are installed, Powerco may apply additional charges as per paragraph 8.1 in recognition of the costs it incurs through the provision of inaccurate data
- (d) The requirements of 39.2(a) – 39.2(c) above do not apply to lights where evidence has been provided to Powerco that all consumption is metered by certified revenue metering installations

39.3 Price Category: Streetlight Lighting Control Equipment Charge

- (a) The Distributor owns Lighting Control Equipment attached to or associated with streetlights in the Western Region
- (b) The Lighting Control Equipment charge for the use of each Distributor streetlight Lighting Control Equipment is:

Daily charge per streetlight Lighting Control Equipment

\$0.1185 dollars per Lighting Control Equipment per day

### 40.0 Eastern Region - Conditions

40.1 The unmetered Price Categories are not available for Residential Connections

40.2 The Distributor does not allow Unmetered Supply (such as streetlights) to be shared across multiple points of connection for new connections

- 40.3 The Unmetered Price Categories are not available for new under-verandah lighting and private streetlight connections from 1 April 2015 (ie all new connections must be metered)
- 40.4 Unmetered supply charges are allocated as:
- (a) V01 and T01 – Unmetered load such as council flow meters, pumps, cameras, small telecommunication cabinets and others. The Distributor will determine eligibility for this Price Category via Powerco’s connections process and policy.
  - (b) V02 and T02 – Council/NZTA streetlighting
- 40.5 Streetlight databases must be received as follows:
- (a) Powerco must receive monthly the streetlight or other unmetered load database from the Retailer or council (or both) as agreed, by the fourth working day of the calendar month
  - (b) Where Powerco has not received the streetlight database as required, or no longer holds confidence in the quantities detailed by the Retailer or council (or both), Powerco will estimate, on a reasonable endeavours basis, the light fitting quantity
- 40.6 Where a permanent unmetered supply’s connected capacity requirement exceeds 5kVA, single phase metering is necessary. Streetlighting is excluded on approval via Powerco’s connections process and policy.
- 40.7 Volume data for all unmetered ICPs must be included in a traders EIEP1 file using the appropriate Price Category and Tariff Option of UNML. For example, T01-UNML or T02-UNML.
- 40.8 Where a metered ICP also has load which is unmetered (such as under-verandah lighting, private lights, or signage) the unmetered volume data must be submitted in the Trader’s EIEP1 file using the relevant Price Category and the Tariff Option UNML. For example, an ICP on the T06S Price Category should have the code T06S-UNML for all unmetered load associated with that ICP.

## 41.0 Eastern Region - Process

- 41.1 Charge codes are allocated to each ICP depending on the type of installation or supply it has installed. Some ICPs may have several installations under the same charge code and/or a variety of charge codes associated with it.
- 41.2 The Distributor will populate the electricity Registry with the equipment wattage and operating hours according to the Electricity Authority Unmetered Load Guidelines:
- (a) From 1 April 2018 the load factor in the Registry unmetered load description field is 0% (prior to 1 April 2018 this factor was set to 10%); and
  - (b) Total equipment wattage is equal to the equipment wattage (including ballast if applicable) multiplied by the quantity of fixtures installed.
- 41.3 Unmetered streetlights not reconciled as part of a Distributor Unmetered Load (DUML) will have a ballast figures applied as per the standardised table of streetlight

wattages published by the Electricity Authority

<https://www.ea.govt.nz/dmsdocument/22161-standardised-table-of-streetlight-wattages>

- 41.4 Charges for Council and New Zealand Transport Agency (NZTA) unmetered streetlighting (V02 and T02) are determined by:
- (a) Fixed Charge - quantity (number of light fixtures connected) multiplied by the unmetered supply Fixed Charge per day (V02 and T02); and
  - (b) Powerco will estimate streetlight-fitting quantities and apply a penalty in instances where streetlight database information is not provided or updated as required.
- 41.5 Charges for V01 and T01 unmetered supply (other than council and NZTA streetlighting covered by V02 and T02) are determined on:
- (a) The equipment wattage (including ballast if applicable);
  - (b) Operating hours (number of hours the equipment is consuming electricity); and
  - (c) The quantity of fixtures/equipment installed.

## 42.0 Eastern Region - Calculation

- 42.1 **Unmetered Streetlights Fixed Charge Calculation** (Council/NZTA Streetlights on T02 or V02 Price Categories) = [The quantity of equipment installed] x [Days in Month] x [Delivery Price]
- 42.2 **Unmetered Load kWh Calculation** (excluding Council/NZTA Streetlights) = [The quantity of equipment installed] x [Wattage plus ballast (if applicable)] x [Days in Month] x [Operating Hours] / 1,000
- (a) For example: 2 x 50W Lights + Ballast of 11W, 31 days in month, 12 daily operating hours =  $\{[2 \times (50 + 11)] \times 31 \times 12\} / 1,000 = 45.38$  kWh.
- 42.3 **Unmetered Load Charge Calculation** (excluding Council/NZTA Streetlights) = Unmetered Load kWh Calculation (kWh) x Delivery Price.
- (a) For example: 1 x 100W appliance, 31 days in month, 8 daily operating hours =  $(1 \times 100 \times 31 \times 8) / 1,000 = 24.80$  kWh.
- 42.4 Shared Unmetered Load: If the Unmetered load is shared across multiple ICPs then the consumption determined in the equations above should be divided by the number of ICPs sharing the load. This figure should then be applied to every ICP sharing that unmetered load.

**PAGE INTENTIONALLY LEFT BLANK**



# Additional information





## Section Two: Loss Factors

### 1.0 General

- 1.1 Losses and loss factors may be reviewed and amended by the Distributor from time to time, on reasonable notice to the Retailer and not less notice than specified in the applicable Network Agreement, to ensure that they reflect total unaccounted for electricity on the Network as accurately as reasonably possible
- 1.2 Losses are calculated at the balancing area level and then applied to ICPs within that balancing area, depending on the supply/metering voltage
- 1.3 Metering Voltage: Low Voltage means metered at 230V single-phase or 400V three-phase, or unmetered; and High Voltage means metered at 6.6kV or higher voltage.
- 1.4 The loss factors currently applying at each GXP are described in the tables below

### 2.0 Loss Factors as of 1 April 2023

Description:	Default	Streetlights	Medium Amp	High Amp	HV Metered
Metering Voltage:	Low	Low	Low	Low	High
Amperage:	Low	Low	Medium	High	High
<b>Taranaki</b>	Balancing Area: BA1WESTPOCOG GXPs: Carrington, Huirangi, Stratford				
Code:	<b>TAR</b>	<b>TARSL</b>	<b>TARM</b>	<b>TARH</b>	<b>TAR11</b>
Factor:	1.0610	1.0610	1.0610	1.0610	1.0210
<b>South Taranaki</b>	Balancing Area: BA2WESTPOCOG GXPs: Hawera, Opunake				
Code:	<b>STA</b>	<b>STASL</b>	<b>STAM</b>	<b>STAH</b>	<b>STA11</b>
Factor:	1.0720	1.0720	1.0720	1.0720	1.0350
<b>Wanganui</b>	Balancing Area: BA3WESTPOCOG GXPs: Brunswick, Marton, Mataroa Ohakune, Wanganui, Waverley				
Code:	<b>WGN</b>	<b>WGNSL</b>	<b>WGNM</b>	<b>WGNH</b>	<b>WGN11</b>
Factor:	1.0900	1.0900	1.0900	1.0900	1.0320
<b>Manawatu</b>	Balancing Area: BA4WESTPOCOG GXPs: Bunnythorpe, Linton				
Code:	<b>MNW</b>	<b>MNWSL</b>	<b>MNWM</b>	<b>MNWH</b>	<b>MNW11</b>
Factor:	1.0850	1.0850	1.0850	1.0850	1.0360
<b>Manawatu (2)</b>	Balancing Area: BA5WESTPOCOG GXPs: Mangamaire				
Code:	<b>MW2</b>	<b>MW2SL</b>	<b>MW2M</b>	<b>MW2H</b>	<b>MW211</b>
Factor:	1.1000	1.1000	1.1000	1.1000	1.0350
<b>Wairarapa</b>	Balancing Area: BA6WESTPOCOG GXPs: Greytown, Masterton				
Code:	<b>WRP</b>	<b>WRPSL</b>	<b>WRPM</b>	<b>WRPH</b>	<b>WRP11</b>
Factor:	1.0840	1.0840	1.0840	1.0840	1.0200

Description:	Default	Streetlights	Medium Amp	High Amp	HV Metered
Metering Voltage:	Low	Low	Low	Low	High
Amperage:	Low	Low	Medium	High	High
<b>Tauranga</b>	Balancing Area: BA1EASTPOCOG GXPs: Tauranga, Mt Maunganui, Te Matai and Kaitemako				
Code:	<b>TGA</b>	<b>n/a</b>	<b>TGAM</b>	<b>TGAH</b>	<b>TGA11</b>
Factor:	1.0500		1.0400	1.0300	1.0200
<b>Valley (Thames Valley/ Coromandel)</b>	Balancing Areas: BA2EASTPOCOG, BA3EASTPOCOG, BA4EASTPOCOG, BA5EASTPOCOG GXPs: Arapuni, Hinuera, Kinleith, Kopu, Piako, Waihou and Waikino				
Code:	<b>VLY</b>	<b>n/a</b>	<b>VLYM</b>	<b>VLYH</b>	<b>STA11</b>
Factor:	1.0814		1.0695	1.0475	1.0330

### 3.0 Site-Specific Losses

3.1 The following site-specific loss codes and factors apply from 1 April 2023. Please contact Powerco for further information on site specific losses.

(a) Loss Factors: Sites primarily with generation

Loss Code	Loss Factor: Load	Loss Factor: Generation
POCO001	1.070	1.070
POCG002	1.038	1.038
POCG003	1.0	1.0
POCG004	1.038	1.010
POCG005	1.080	1.080
POCG006	1.080	1.080
POCG007	1.040	1.0
POCG008	1.073	1.0
POCG009	1.080	1.080
POCG010	1.080	1.080
POCG011	1.0	1.0
POCG012	1.0652	1.0652
POCG013	1.0	1.0314
POCG014	1.0	1.0
POCG015	1.0	1.0
POCG016	1.0	1.0
POCG017	1.0	1.0
POCG018	1.048	1.048
POCG019	1.070	1.070
POCG020	1.063	1.063
POCG021	1.080	1.080
POCG022	1.063	1.063
POCG023	1.0652	1.0652
POCG024	1.0	1.0169
POCG025	1.0	1.0
POCG026	1.0	1.0
POCG027	1.0652	1.0
POCG028	1.033	1.0
POCG029	1.0	1.0
POCG030	1.0	1.0

(b) Loss Factors: Sites primarily with load

Loss Code	Loss Factor: Load	Loss Factor: Generation
POCO201	1.008	1.0
POCO202	1.011	1.0
POCO203	1.012	1.0
POCO204	1.014	1.0
POCO205	1.015	1.0
POCO206	1.017	1.0
POCO207	1.018	1.0
POCO208	1.0149	1.0
POCO209	1.023	1.0
POCO210	1.024	1.0
POCO211	1.025	1.0
POCO212	1.026	1.0
POCO213	1.029	1.0
POCO214	1.032	1.0
POCO215	1.0864	1.0
POCO216	1.038	1.0

## Section Three: Billing and Settlement Process

### 1.0 General

The following covers Powerco's billing and settlement processes. Both the Distributor and the Retailer recognise that the process of calculating accurate charges is dependent on the prompt and accurate supply of information by the Retailer to both industry bodies and to the Distributor.

Standard monthly data provision and billing timeline:

<b>1st working day of the month (revision billing)</b>	Retailer must provide Consumption Data in EIEP1 and EIEP3 format (EIEP3 data only if it is missing or originally incorrect) for upcoming revision billing (R3, R7 and R14). Please refer to paragraph 5.3 of this schedule.
<b>5<sup>th</sup> working day by 4:00 pm (initial billing)</b>	Retailer must provide Consumption Data in EIEP1 and EIEP3 format (Consumption Data Due Date) for initial billing
<b>6<sup>th</sup> – 7<sup>th</sup> working day</b>	Invoices produced for direct billed Customers and sent to Retailers or Direct Customers, as applicable
<b>8<sup>th</sup> – 10<sup>th</sup> working day</b>	Initial ICP billing/ GXP billing invoices produced for all Retailers
<b>Last business day of the month</b>	Revision invoices produced for ICP billing and sent to Retailers or direct Customers, as applicable

#### 1.1 Retailer's Responsibility for Points of Connection:

- (a) The Retailer must adhere to the processes set out in the Network Agreement and any relevant Powerco policy when establishing or altering the physical status of a Point of Connection;
- (b) The Distributor will maintain a database of Points of Connection, referenced by Installation Control Points, and aligned to the information held by the Registry appointed under the Code to determine which Retailer is responsible for an Installation Control Point and the status of the Point of Connection; and
- (c) The Retailer may request, for all Installation Control Points for which the Distributor has the Retailer listed as being responsible, an electronic copy of the relevant part of the database.

### 2.0 Submissions – Consumption Data

- 2.1 Initial Billing, each Retailer must provide Consumption Data for the Consumption Month to be billed on or before the 5th working day of the Processing Month (Consumption Data Due Date). For revised billing, please refer to the table above.
- 2.2 Each Retailer is to provide Consumption Data in a replacement normalised format (which is data adjusted to reflect a start and end date that matches the start and end date of Consumption Month to be invoiced).
- 2.3 Consumption Data must be normalised using the Replacement Normalised methodology. Retailers may not use any other submission methodologies (such as Incremental Normalised) without consultation with, and approval by, the Distributor.
- 2.4 Each Retailer should submit Consumption Data to the Distributor via the registry EIEP Transfer Tool. Files delivered to Powerco must be compliant with the format

structure of the latest regulated version EIEP1 and EIEP3 protocols. Each Retailer must upload a single Initial File, which includes records for all ICPs on any of the Distributor's Networks.

- 2.5 If, by the Consumption Data Due Date, Retailers have not submitted an Initial File that complies with the latest regulated version of the EIEP1 and EIEP3 protocols (or have not submitted an Initial File at all) then the Initial File will not be accepted for billing and the Distributor may estimate volume for such record as detailed in paragraph 3.1(c)
- 2.6 Consumption Data received by the Distributor after the Consumption Data Due Date may be subject to a Late Consumption Data fee set out in paragraph 8.1 of Part A, Section One, of this document

### 3.0 Process by Billing Methodology

#### 3.1 ICP-Based Billing Process

- (a) The ICP-based invoice issued to each Retailer will detail the ICP related variable and fixed charges that apply across the Eastern and Western Regions (SPECIAL, W50 & E100)
- (b) If a Customer is contracted directly with the Distributor via a Network Agreement, it will be denoted on the Registry via the Direct Billed Status field. These Customers are billed directly for Delivery Charges by the Distributor
- (c) The Distributor will calculate Delivery Charges for the Consumption Month based on Consumption Data provided (or estimated) and the number of Active ICPs on the Distributor's Network. For any ICPs that were Active during the Consumption Month where Consumption Data has not been provided, is incomplete, materially incorrect, or not in the specified format the Distributor may estimate consumption based on:
  - I. The average daily volume for ICPs in the relevant Price Category for the month prior to the Consumption Month, or
  - II. For half-hour metered ICPs, the relevant ICP's consumption from the month prior to the Consumption Month (or the latest available Consumption Month).
- (d) The Distributor will provide an output file of all amounts invoiced with each invoice issued. The detail file will be in the format as specified in the regulated version of the EIEP1 protocol. Any Consumption Data estimated by the Distributor will have a "PROJ" (projection) appended to the relevant tariff option within this output file.

### 3.2 GXP-Based Billing Process

- (a) The invoices issued to each Retailer will detail the volume, demand, and fixed charges in relation to Connections on the E1 Price Category for the Western Region
- (b) Fixed Delivery Charges will be based on the number of ICPs with Active status that each Retailer has during the Consumption Month

### 3.3 Method of Determining Quantities

- (a) The method and structure of Delivery Charges determines what quantities are required for billing purposes
- (b) The Distributor uses reconciled data from the Reconciliation Manager (RM) to derive the quantities necessary for monthly billing of its GXP-based Delivery Charges for the E1 Price Category
- (c) This data is deemed accurate, acceptable to all parties and readily available through the Reconciliation Manager (RM). In using data supplied by the RM, the Distributor applies the RM revision files when generated as part of the RM revision cycle. Should the data not be available from the RM, then the Distributor will produce an estimated invoice based on either the previous month's data or the data for the same month in the previous year, whichever is deemed appropriate by the Distributor (seasonally adjusted at the Distributor's discretion), and this will be adjusted when RM data becomes available.
- (d) In situations where data is not available through the RM (eg totally Embedded Generation that is not reconciled), the Distributor will obtain metered data through appropriate agreements and convert to GXP-based data by applying the appropriate Distribution Network loss factor(s)
- (e) To establish the quantities for the E1 Price Category, the quantities relating to the E100, W50, and SPECIAL Price Categories (adjusted by the appropriate Distribution Network loss factors) are subtracted from the half-hour gross load at the GXP (gross load = busload + Embedded Generation data)
- (f)  $E1 \text{ quantities} = \text{GXP gross load} - \text{sum of half hour adjusted quantities (E100 + W50 + SPECIAL)}$
- (g) For E100, W50, and SPECIAL Price Categories, site-metered data provided will be adjusted to GXP-based data by adding the appropriate Distribution Network loss factors. This Time of Use (TOU) metering data should mirror the data being submitted by the Retailer to the RM.
- (h) The Retailer must provide TOU metering data in EIEP3 format to the Distributor or the Distributor's nominated agent within five business days from the end of the prior month (Consumption Data Due Date) for any Connection within the E100, W50, and SPECIAL Price Categories
- (i) Where the Retailer has been unable to provide EIEP3 files for Western Region E100, W50, and SPECIAL ICPs, and is unable to provide estimated data, the volume will not be able to be subtracted from the GXP volumes



and therefore will be invoiced within the E1 residual volume. Similarly, inaccurate data, if not corrected prior to the GXP billing process run on business day 8, will impact on and may be included in the Delivery Charges invoiced to the E1 Price Category. This will be subject to subsequent adjustment via the revision cycle.

- (j) TOU metering data received by the Distributor after the Consumption Data Due Date, may be subject to a Late Consumption Data fee set out in paragraph 8.1 of Part A, Schedule One of this document

## 4.0 Payment

- 4.1 The invoice for GXP-based Delivery Charges for the Consumption Month and any revision amounts will be sent to the Retailer by the 10th working day of the Payment Month, and will be payable on the 20th day of that same month
- 4.2 The invoice for ICP-based Delivery Charges for the Consumption Month will be sent to the Retailer by the 10th working day of the Payment Month, and will be payable on the 20th day of that same month
- 4.3 ICP-based revision invoices or credit notes are sent throughout the remainder of the Processing Month and will be due for payment on the 20th day of the following month
- 4.4 If the Distributor fails to send an invoice to the Retailer by the 10th working day of the Payment Month, then the due date for payment will be extended by one working day for each working day that the invoice is late
- 4.5 If any part of an invoice is not paid by the due date, Default Interest may be charged on the outstanding amount for the period that the Invoice remains unpaid.

## 5.0 Revision Cycles and Reconciliation

- 5.1 Revision Cycles
  - (a) Both the Distributor and the Retailer recognise that the cyclical nature of meter reading makes it impractical to provide completely accurate figures for consumption for each Point of Connection within the timeframe required for payment of Delivery Charges. It is, therefore, necessary to provide a structure for subsequent revisions of prior billed periods.
  - (b) Each revision cycle will account for changes in fixed and variable Delivery Charges due, based on Retailer switches, status changes, and Replacement Data uploaded by Retailers submitting to Powerco under the Replacement Normalised methodology
  - (c) Any Retailer submitting Replacement Normalised data to Powerco may submit Replacement Data up to 14 months from the Consumption Month to which the Replacement Data relates
  - (d) Where the Distributor reasonably considers that an additional revision cycle is required, it may, at its discretion, perform a 1-month revision in addition to the 3, 7, and 14-month revisions provided for in paragraph 5.3
- 5.2 Replacement Data
  - (a) Replacement Data can be either uploaded via the registry EIEP transfer tool (or provided via previously agreed methods) at any time up to 14 months

from the Consumption Month to which the Replacement Data relates. Replacement and Partial Replacement files will be subject to validation against file format and submission type business rules as applied by the Distributor from time to time and as outlined in paragraphs 2.4 and 2.5. Replacement Data submitted will be reconciled and billed when the Distributor runs its 3, 7, and 14-month revision billing cycles.

- (b) For Incremental normalised submissions (subject to paragraph 2.3), the Retailer is to progressively adjust the volumes in each Retailer billing cycle. Accordingly, only Partial Replacement Files will be accepted. Full Replacement Files will not be accepted under this method unless there has been a material error with the initial file received.
- (c) Incremental Normalised submissions (subject to paragraph 2.3) may include prior period corrections. These volumes will be billed along with the normalised volumes provided in the Current Month submission. Prior period volumes that can be attributed to consumption periods outside the Distributor's revision cycle limit (14 months) will be disregarded.
- (d) For Replacement Normalised submissions, volumes are not progressively revised and are replaced with Full Replacement Files or Partial Replacement Files. As such, the Distributor requires that Retailers submitting under this methodology supply 3, 7 and 14-month revision files. Replacement Data must comply with the latest regulated version of the EIEP1 protocol for full (R Files) and partial (X Files).
- (e) Replacement files for HHR metered data must comply with the latest regulated version of the EIEP3 protocol. Powerco's system processes EIEP3 full replacement files at the ICP level and replaces the volume for only those ICPs which are included in the file. This also applies for partial replacement files.
- (f) For GXP and ICP-based billing, volumes will be progressively revised as set out in the revision schedule

### 5.3 Revision Schedule

Processing Month	Revision Cycle	Report Month	Processing Month	Revision Cycle	Report Month
April 2023	Initial	March 2023	October 2023	Initial	September 2023
	R3	December 2022		R3	June 2023
	R7	August 2022		R7	February 2023
	R14	January 2022		R14	July 2022
May 2023	Initial	April 2023	November 2023	Initial	October 2023
	R3	January 2023		R3	July 2023
	R7	September 2022		R7	March 2023
	R14	February 2022		R14	August 2022
June 2023	Initial	May 2023	December 2023	Initial	November 2023
	R3	February 2023		R3	August 2023
	R7	October 2022		R7	April 2023
	R14	March 2022		R14	September 2022
July 2023	Initial	June 2023	January 2024	Initial	December 2023
	R3	March 2023		R3	September 2023
	R7	November 2022		R7	May 2023
	R14	April 2022		R14	October 2022
August 2023	Initial	July 2023	February 2024	Initial	January 2024
	R3	April 2023		R3	October 2023
	R7	December 2022		R7	June 2023
	R14	May 2022		R14	November 2022
September 2023	Initial	August 2023	March 2024	Initial	February 2024
	R3	May 2023		R3	November 2023
	R7	January 2023		R7	July 2023
	R14	June 2022		R14	December 2022

**PAGE INTENTIONALLY LEFT BLANK**



**POWERco**